



**SCIENTIFIC COMMITTEE
SIXTEENTH REGULAR SESSION**

Online Meeting
11 –20 August 2020

ESTIMATES OF ANNUAL CATCHES IN THE WCPFC STATISTICAL AREA

WCPFC-SC16-2020/ST IP-1

Paper prepared by

Oceanic Fisheries Programme (OFP)
Pacific Community (SPC)
Noumea, New Caledonia

Introduction

Estimates of annual catches in the WCPFC Statistical Area (Figure 1) are presented for target tuna species, i.e., albacore (*Thunnus alalunga*) bigeye (*Thunnus obesus*), skipjack (*Katsuwonus pelamis*) and yellowfin (*Thunnus albacares*), and major billfish species, i.e., black marlin (*Makaira indica*), blue marlin (*Makaira mazara*), striped marlin (*Tetrapturus audax*) and swordfish (*Xiphias gladius*). Estimates of catches of southern bluefin tuna (*Thunnus maccoyii*) are compiled by the Commission for the Conservation of Southern Bluefin Tuna (CCSBT).

Target Tuna Species

Tables 1–7 and Figures 2 and 3 present estimates of annual catches of target tunas in the WCPFC Statistical Area. For a breakdown of recent catch estimates by gear and flag, see WCPFC (2019). For discussion regarding trends, see Williams and Reid (2020).

Past studies using observer data (e.g. Lawson, 2007, Lawson, 2010, Lawson, 2012, Hampton and Williams, 2017) show that the purse seine logsheet-reported catch, mainly for associated sets, should contain higher quantities of yellowfin and bigeye tuna that have been misreported as skipjack tuna. Purse-seine catch estimates that have been adjusted with species compositions determined from observer grab samples corrected for size selectivity bias (see Peatman et al., 2019 for the latest methodology) are presented as the official purse-seine catch estimates in Table 5. All composite tables and figures referring to purse-seine species catch are consistent with the Table 5 estimates of purse-seine catches of skipjack, yellowfin and bigeye tuna.

Tables 7–10 present estimates of annual catches of target tunas in the WCPO Area and the EPO Area (Figure 1) by gear type. Tables 11–13 present estimates of annual catches of target tunas for the WCPO, the EPO and the Pacific Ocean by species. Tables 14 and 15, and Figures 4 and 5 present global catches of target tunas, by species and ocean area, respectively.

Tuna Discards

Observer data have been used to determine the discard rates for albacore, bigeye and yellowfin caught by longliners (Table 16) and skipjack, yellowfin and bigeye caught by purse seiners (Table 17).

Tuna discards by longliners in the WCPFC Statistical Area during 1994–2019 were estimated by applying discard rates by flag and year, determined from observer data, to tuna species catch estimates, by flag and year, and then summing the tuna discards (by species) across all flags. Discard rates for flag/year combinations where there were insufficient data (defined as (i) less than 10 observer trips or (ii) less than 500 fish samples available), were substituted with discard rates determined for that year with all flags combined. The average discard rate for the three target tuna species caught by longliners during the period was 2.1%. During 2019, the estimated tuna discard was 1.8% and based on available observer data, most of the bigeye and yellowfin tuna discards comprised of fish less than 95 cm (Figures 6 and 7), noting that many discarded tuna are also not available to be measured by the observer.

Tuna discards by purse seiners in the WCPFC Statistical Area during 1995–2019 were estimated by applying discard rates by flag, year and school association (unassociated and associated), determined from observer data, to tuna species catch estimates, by flag, year and school association, and then summing the tuna discards (by species) across all flags. Discard rates for flag/year/school association combinations where there were insufficient data (defined as (i) less than 5 observer trips or (ii) less than 1,000 mt of catch observed), were substituted with discard rates determined for school association (with all years/flags combined) for years prior to 2008, and substituted with discard rates determined for year/school association (with all flags combined) for years since 2008. This method was used since an analysis of variance of discard rates for skipjack, yellowfin and bigeye caught by purse seiners indicated that species, school association and flag, but not year, were significant predictors. However, management measures (CMM 2009-02) were established to restrict the discard of tuna, which means that the year effect has been considered in the estimation process for recent years. The average discard rate for the three target tuna species caught by purse seiners during this period was 2.4%.

with an estimated 0.9% discarded in 2019. [Note that the reporting of purse-seine discards by vessel is a requirement under CMM 2009-02 and is currently independent to the estimates produced in this paper].

The submission of annual estimates of discards for the WCPFC key species is a mandatory requirement under the *Scientific Data to be Provided to the Commission*¹ covering data for years 2019 onwards.

Major Billfish Species

Table 18 presents estimates of commercial catches of the four major billfish species by gear type. Table 19 and Figure 8 present estimates of the major billfish catches for all gear types combined. Tables 20 and 21 present estimates of commercial catches of striped marlin and swordfish in the WCPFC Statistical Area north and south of the equator respectively. Table 22 presents estimates of commercial catches of albacore, striped marlin and swordfish in the Pacific Ocean, south of the equator.

REFERENCES

- Hampton J. & P.G. Williams 2017. ANNUAL ESTIMATES OF PURSE SEINE CATCHES BY SPECIES BASED ON ALTERNATIVE DATA SOURCES. Working Paper ST-IP-3. Thirteenth Regular Session of the Scientific Committee of the WCPFC. Rarotonga, Cook Islands. 9–17 August 2017.
- Lawson, T.A. 2007. Further analysis of the proportion of bigeye in ‘yellowfin plus bigeye’ caught by purse seiners in the WCPFC Statistical Area. Information Paper ST-IP-5. Third Regular Session of the WCPFC Scientific Committee, 13–24 August 2006, Honolulu, Hawaii, United States of America. Oceanic Fisheries Programme, Secretariat of the Pacific Community, Noumea, New Caledonia.
- Lawson, T.A. 2010. Update on the estimation of selectivity bias based on paired spill and grab samples collected by observers on purse seiners in the Western and Central Pacific Ocean. Working Paper ST-WP-2. Sixth Regular Session of the Scientific Committee of the WCPFC. Nuku'alofa, Tonga. 10–19 August 2010.
- Lawson, T.A. 2012. Estimation of the species composition of the catch by purse seiners in the Western and Central Pacific Ocean using grab samples and spill samples collected by observers. Working Paper ST-WP-3. Eighth Regular Session of the Scientific Committee of the WCPFC. Busan, Republic of Korea. 7–15 August 2012.
- Lawson, T.A. 2013. Estimation of the species composition of the catch by purse seiners in the Western and Central Pacific Ocean – a response to recent independent reviews. Working Paper ST-WP-3. Ninth Regular Session of the Scientific Committee of the WCPFC. Pohnpei, FSM. 6–14 August 2013.
- Peatman, T., S. Fukofuka, T. Park, P. Williams, J. Hampton. (2019). Better purse seine catch composition estimates: recent progress and future work plan for Project 60. WCPFC-SC15-2019/ST-WP-02. Fifteenth Regular Session of the Scientific Committee of the WCPFC (SC14). Pohnpei, FSM. 12–20 August 2019.
- WCPFC. 2019. WCPFC Tuna Fishery Yearbook, 2018. Western and Central Pacific Fisheries Commission, Pohnpei, Federated States of Micronesia.
- Williams, P., C. Reid, T. Ruaia. 2020. Overview of tuna fisheries in the Western and Central Pacific Ocean, Including Economic Conditions – 2019. Working Paper GN-WP-1. Sixteenth Regular Session of the Scientific Committee of the WCPFC (SC16). Online Meeting. 11–20 August 2020.

¹ See https://www.wcpfc.int/system/files/Att%20G_Revised%20SciData%20decision.pdf

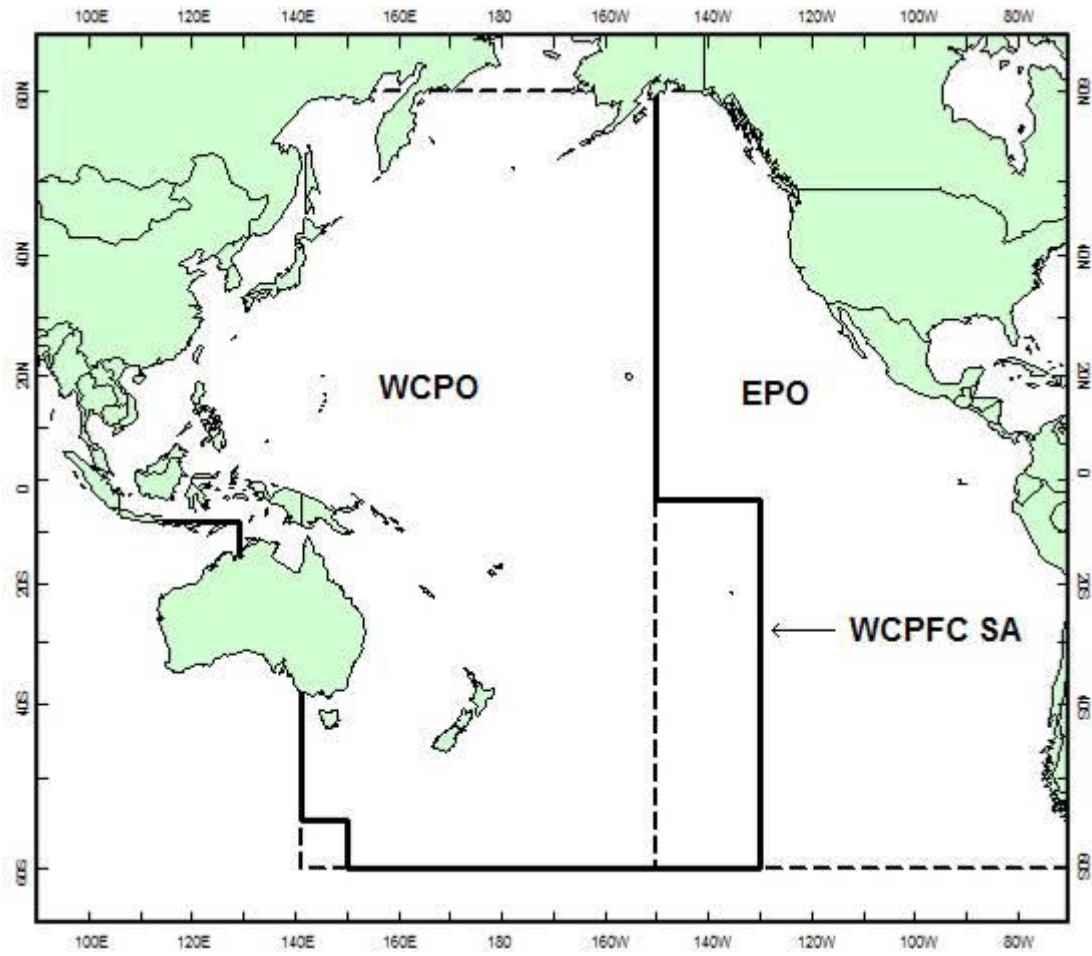


Figure 1. WCPFC Statistical Area (WCPFC SA), the Western and Central Pacific Ocean (WCPO) Area and the Eastern Pacific Ocean (EPO) Area

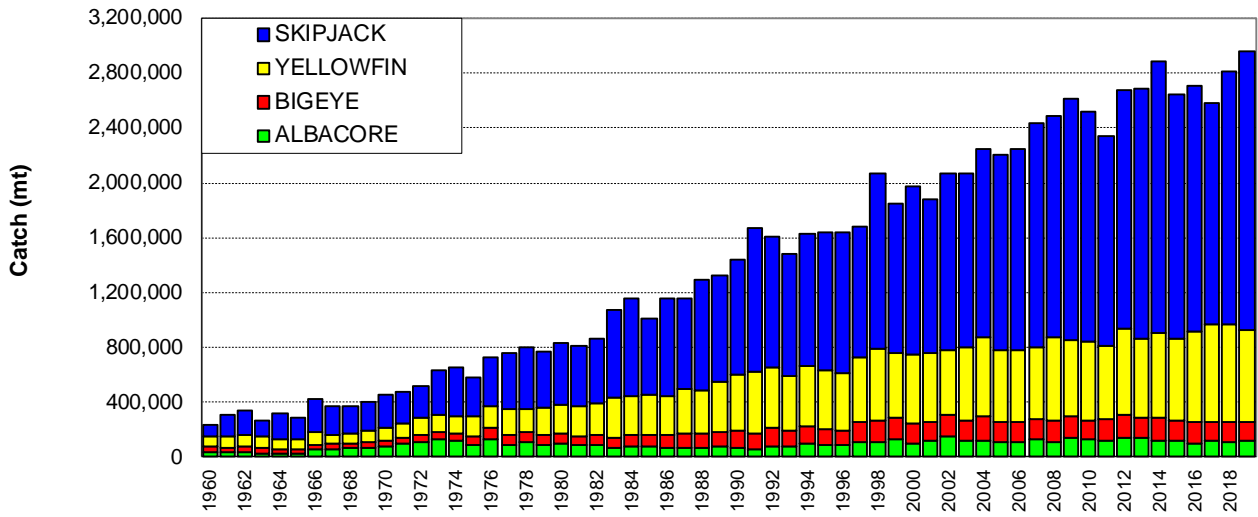


Figure 2. Catches of tuna in the WCPFC Statistical Area, by species

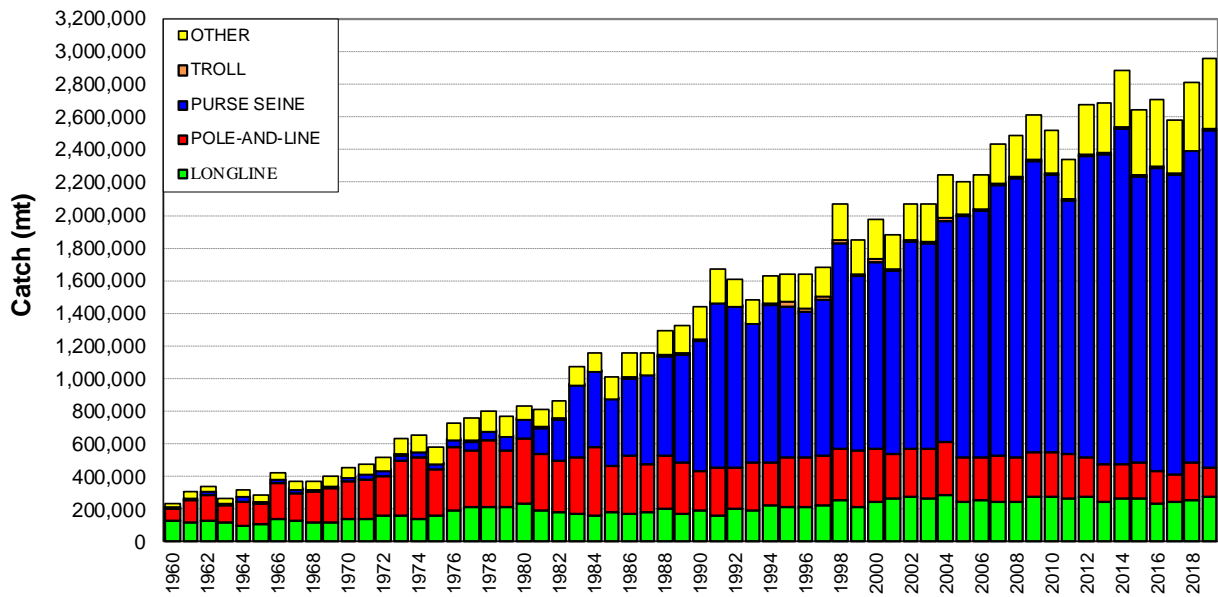


Figure 3. Catches of tuna in the WCPFC Statistical Area, by gear type

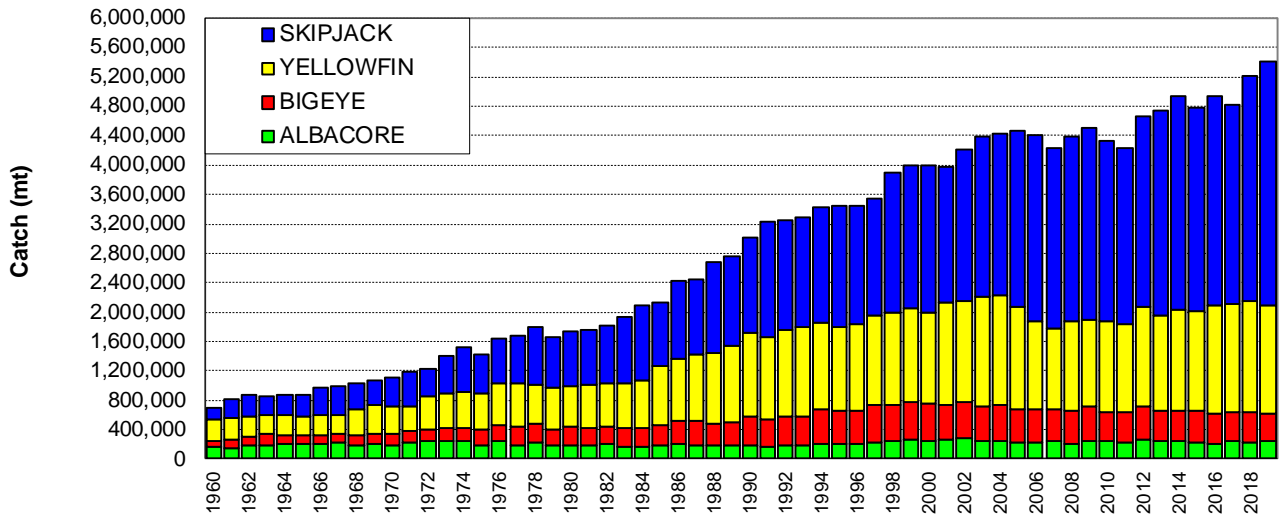


Figure 4. Global catches of tuna, by species

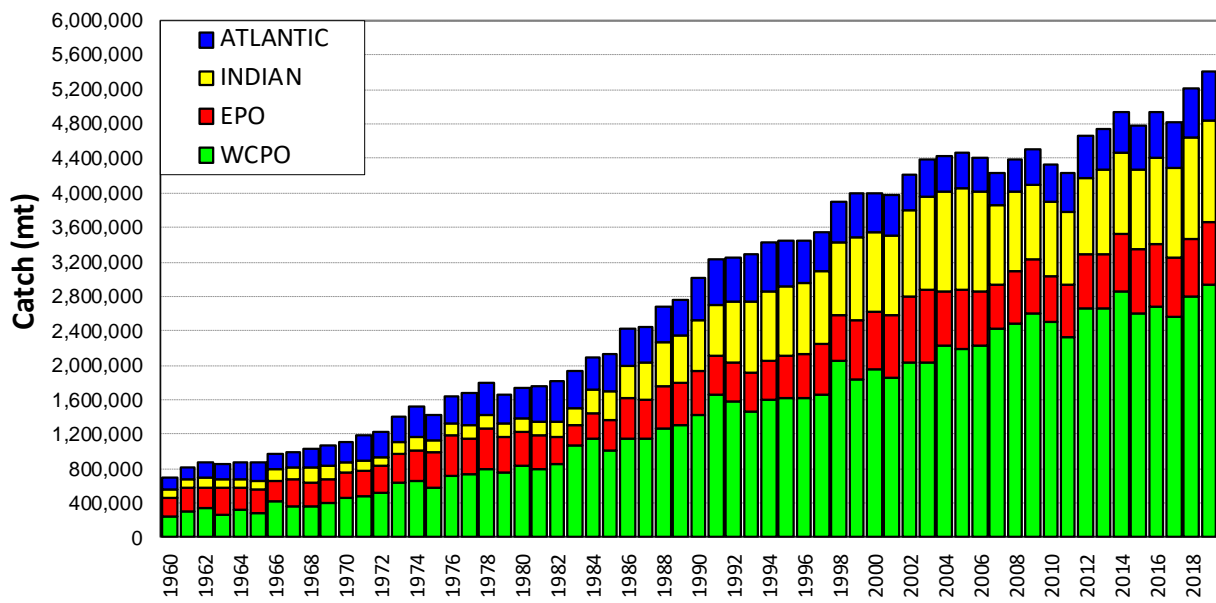


Figure 5. Global catches of tuna, by ocean area

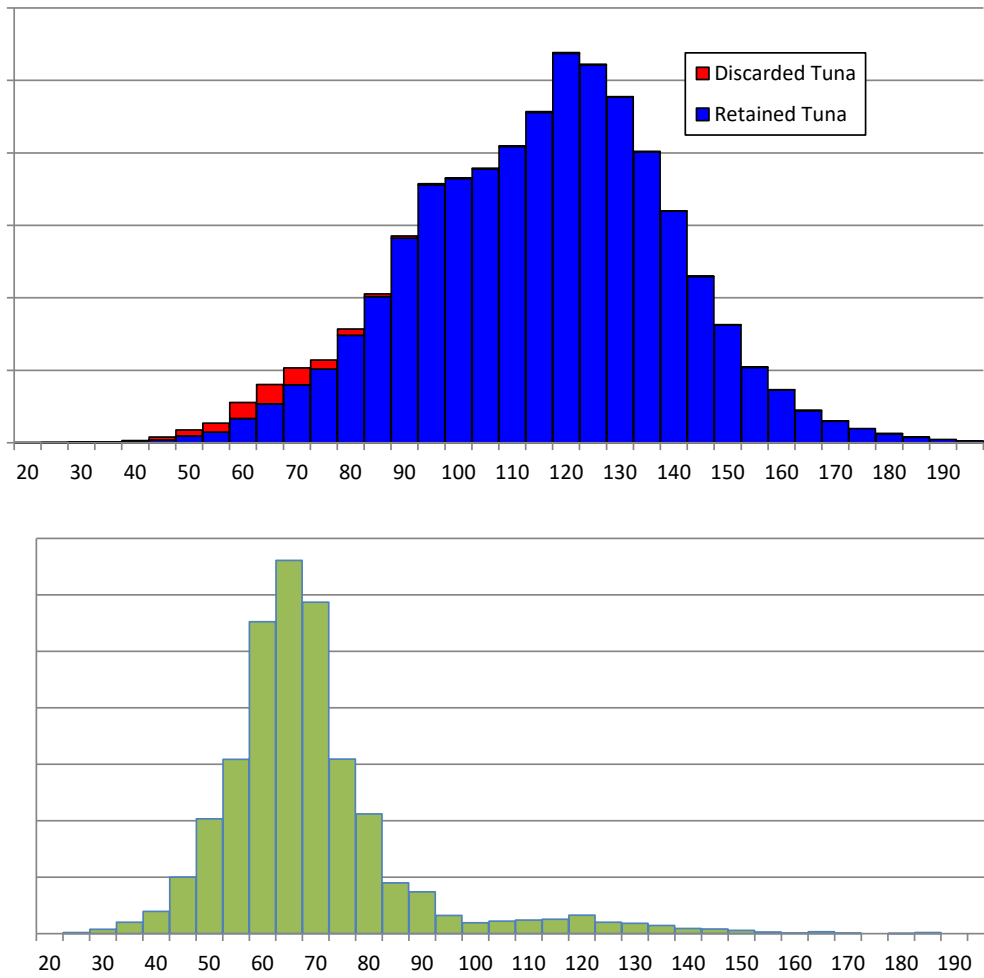


Figure 6. Longline bigeye tuna discard by size categories, 2015–2019.

Top—Retained and discarded bigeye tuna by size

Bottom—Discarded bigeye tuna by size

(Based on available unweighted, observer data)

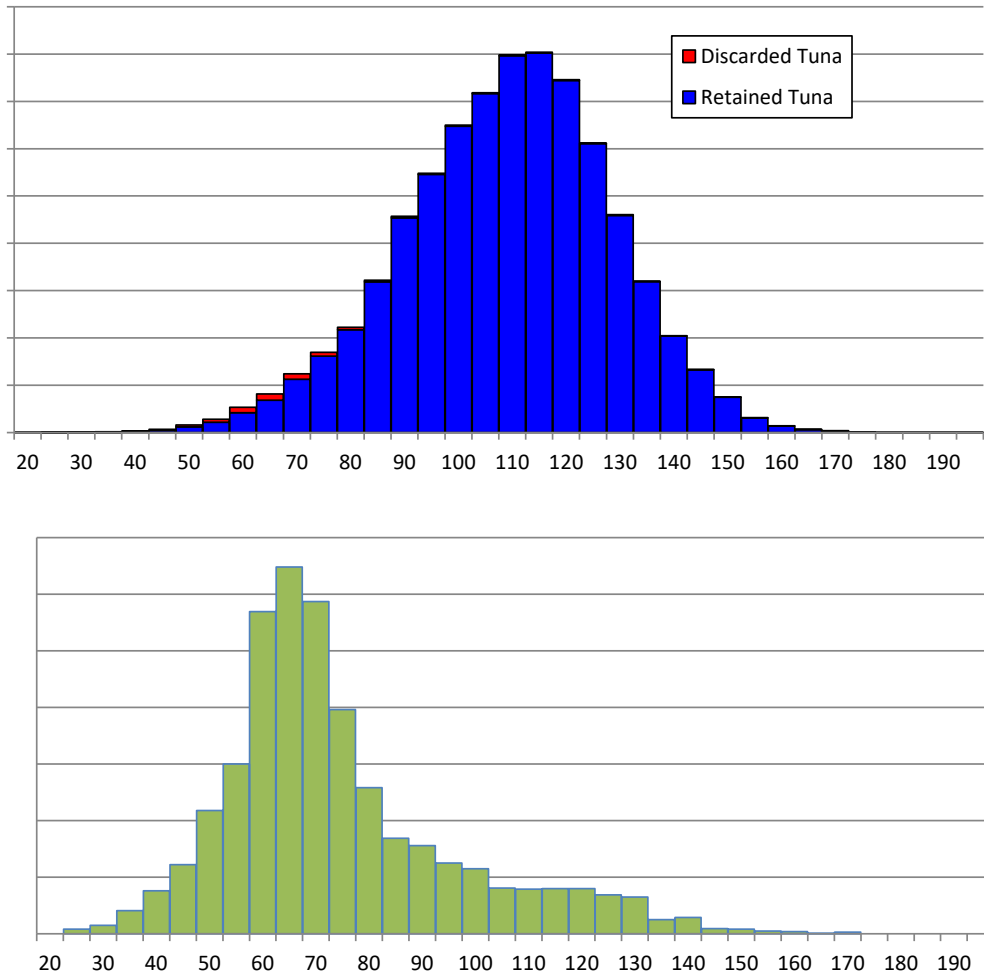


Figure 7. Longline yellowfin tuna discard by size categories, 2015–2019.
 Top—Retained and discarded yellowfin tuna by size
 Bottom—Discarded yellowfin tuna by size

(Based on available unweighted, raw observer data)

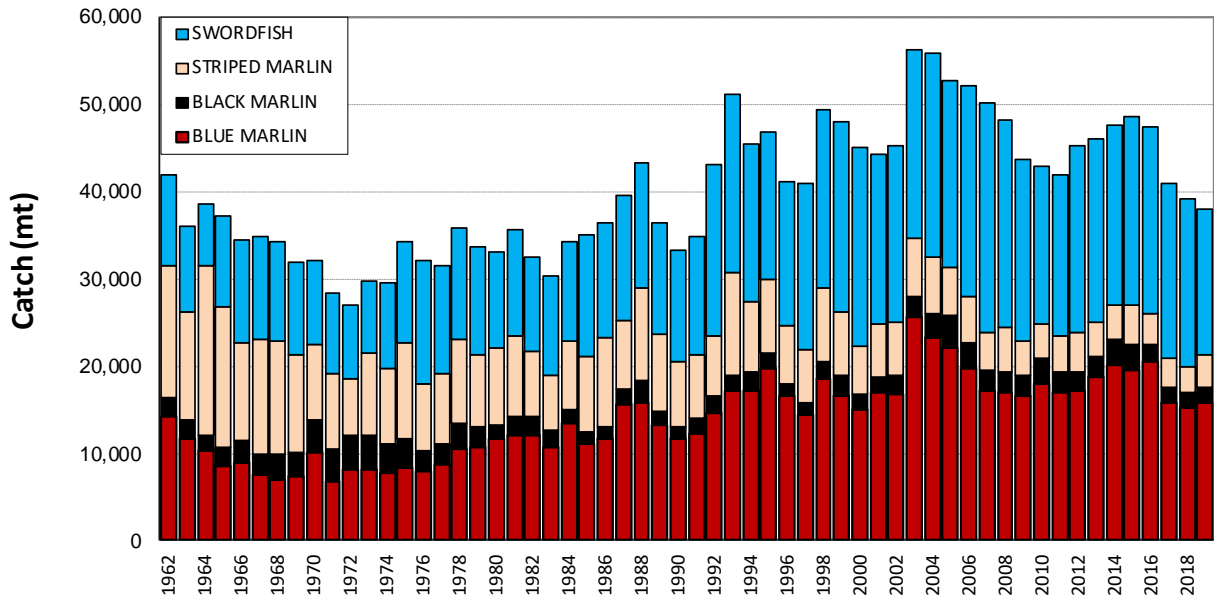


Figure 8. Commercial catches of major billfish species in the WCPFC Statistical Area

Table 1. Catches of target tunas in the WCPFC Statistical Area, by species

YEAR	ALBACORE		BIGEYE		SKIPJACK		YELLOWFIN		TOTAL
	TONNES	%	TONNES	%	TONNES	%	TONNES	%	
1960	31,463	13	45,025	19	89,938	37	73,667	31	240,093
1961	32,922	11	39,380	13	156,736	51	75,438	25	304,476
1962	37,602	11	36,868	11	181,624	53	83,944	25	340,038
1963	26,815	10	44,346	16	122,703	46	75,756	28	269,620
1964	26,687	8	32,391	10	182,918	58	74,154	23	316,150
1965	28,735	10	31,333	11	155,221	54	73,635	25	288,924
1966	52,284	12	33,187	8	249,514	58	93,099	22	428,084
1967	58,822	16	36,749	10	204,837	55	68,932	19	369,340
1968	64,213	17	30,426	8	195,027	52	81,908	22	371,574
1969	72,106	18	36,033	9	203,327	51	87,274	22	398,740
1970	74,350	16	41,689	9	242,261	53	99,107	22	457,407
1971	100,737	21	44,144	9	228,632	48	105,054	22	478,567
1972	109,655	21	57,151	11	237,856	46	116,124	22	520,786
1973	131,149	21	48,853	8	328,823	52	128,449	20	637,274
1974	115,162	18	52,757	8	356,498	54	131,298	20	655,715
1975	84,651	15	69,269	12	288,824	49	140,968	24	583,712
1976	132,947	18	82,742	11	357,629	49	152,699	21	726,017
1977	83,171	11	83,388	11	403,079	53	184,466	24	754,104
1978	111,161	14	66,226	8	450,083	56	176,881	22	804,351
1979	86,007	11	73,568	10	412,548	53	199,497	26	771,620
1980	95,156	11	72,301	9	451,805	54	218,073	26	837,335
1981	88,095	11	64,348	8	433,322	54	223,444	28	809,209
1982	89,496	10	73,149	8	470,705	55	228,715	27	862,065
1983	65,988	6	79,470	7	638,797	60	286,011	27	1,070,266
1984	74,540	6	86,637	7	716,941	62	282,886	24	1,161,004
1985	77,060	8	87,595	9	561,292	55	289,483	29	1,015,430
1986	71,757	6	93,066	8	713,338	62	275,826	24	1,153,987
1987	63,645	6	110,987	10	653,893	57	324,498	28	1,153,023
1988	67,948	5	107,005	8	806,864	62	311,816	24	1,293,633
1989	73,533	6	107,401	8	768,567	58	371,865	28	1,321,366
1990	63,872	4	127,162	9	836,704	58	414,463	29	1,442,201
1991	58,322	3	115,274	7	1,047,969	63	447,227	27	1,668,792
1992	74,452	5	138,530	9	946,799	59	445,787	28	1,605,568
1993	77,496	5	116,151	8	889,312	60	401,421	27	1,484,380
1994	96,461	6	129,919	8	960,941	59	438,676	27	1,625,997
1995	91,750	6	111,080	7	998,729	61	433,296	27	1,634,855
1996	91,140	6	106,000	6	1,030,648	63	411,239	25	1,639,027
1997	112,900	7	138,555	8	949,551	56	480,182	29	1,681,188
1998	112,465	5	152,312	7	1,272,715	62	527,620	26	2,065,112
1999	131,066	7	152,748	8	1,093,492	59	474,533	26	1,851,839
2000	101,171	5	148,096	8	1,224,246	62	499,054	25	1,972,567
2001	121,561	6	139,146	7	1,127,520	60	496,729	26	1,884,956
2002	147,793	7	157,481	8	1,286,211	62	472,986	23	2,064,471
2003	122,949	6	145,163	7	1,262,243	61	536,215	26	2,066,570
2004	122,343	5	180,025	8	1,374,353	61	568,240	25	2,244,961
2005	105,135	5	150,389	7	1,421,288	64	528,683	24	2,205,495
2006	104,986	5	155,759	7	1,473,507	66	514,311	23	2,248,563
2007	126,701	5	152,466	6	1,637,845	67	521,569	21	2,438,581
2008	104,966	4	163,668	7	1,618,161	65	603,801	24	2,490,596
2009	135,476	5	158,416	6	1,764,294	67	559,334	21	2,617,520
2010	124,902	5	141,568	6	1,680,533	67	571,688	23	2,518,691
2011	115,766	5	162,922	7	1,524,890	65	534,711	23	2,338,289
2012	143,215	5	165,203	6	1,739,439	65	626,666	23	2,674,523
2013	137,770	5	153,882	6	1,826,981	68	572,894	21	2,691,527
2014	121,772	4	164,446	6	1,978,927	69	619,897	21	2,885,042
2015	119,716	5	143,551	5	1,779,730	67	599,046	23	2,642,043
2016	100,132	4	150,581	6	1,789,530	66	666,130	25	2,706,373
2017	124,467	5	129,753	5	1,618,210	63	713,824	28	2,586,254
2018	110,915	4	148,880	5	1,846,344	66	704,844	25	2,810,983
2019	121,787	4	135,680	5	2,034,230	69	669,362	23	2,961,059

Table 2. Catches of target tunas in the WCPFC Statistical Area, by gear type

YEAR	LONGLINE		POLE-AND-LINE		PURSE SEINE		TROLL		OTHER		TOTAL
	TONNES	%	TONNES	%	TONNES	%	TONNES	%	TONNES	%	
1960	129,874	54	73,800	31	5,224	2	0	0	31,195	13	240,093
1961	123,330	41	132,070	43	14,540	5	0	0	34,536	11	304,476
1962	128,804	38	157,412	46	18,875	6	0	0	34,947	10	340,038
1963	122,263	45	98,628	37	11,934	4	0	0	36,795	14	269,620
1964	102,481	32	143,323	45	29,012	9	0	0	41,334	13	316,150
1965	103,955	36	134,621	47	8,621	3	0	0	41,727	14	288,924
1966	145,278	34	218,900	51	16,913	4	0	0	46,993	11	428,084
1967	128,047	35	174,774	47	14,508	4	5	0	52,006	14	369,340
1968	120,136	32	183,954	50	15,143	4	14	0	52,327	14	371,574
1969	122,806	31	208,748	52	9,483	2	0	0	57,703	14	398,740
1970	141,360	31	230,142	50	16,222	4	50	0	69,633	15	457,407
1971	143,625	30	241,506	50	24,511	5	0	0	68,925	14	478,567
1972	161,533	31	242,745	47	29,031	6	268	0	87,209	17	520,786
1973	166,399	26	330,841	52	36,269	6	484	0	103,281	16	637,274
1974	145,192	22	370,499	57	29,548	5	898	0	109,578	17	655,715
1975	164,049	28	279,663	48	27,685	5	646	0	111,669	19	583,712
1976	198,013	27	382,627	53	40,770	6	25	0	104,582	14	726,017
1977	218,413	29	345,257	46	53,491	7	621	0	136,322	18	754,104
1978	212,059	26	407,482	51	52,040	6	1,686	0	131,084	16	804,351
1979	211,221	27	344,799	45	90,102	12	814	0	124,684	16	771,620
1980	230,625	28	398,498	48	116,754	14	1,489	0	89,969	11	837,335
1981	191,732	24	348,917	43	158,558	20	2,118	0	107,884	13	809,209
1982	179,575	21	316,457	37	255,491	30	2,552	0	107,990	13	862,065
1983	175,498	16	342,287	32	442,154	41	949	0	109,378	10	1,070,266
1984	162,111	14	415,016	36	462,275	40	3,124	0	118,478	10	1,161,004
1985	177,722	18	287,892	28	409,536	40	3,468	0	136,812	13	1,015,430
1986	169,129	15	360,864	31	474,837	41	2,284	0	146,873	13	1,153,987
1987	179,966	16	294,879	26	543,979	47	2,350	0	131,849	11	1,153,023
1988	200,774	16	327,997	25	608,998	47	4,671	0	151,193	12	1,293,633
1989	170,876	13	311,981	24	664,658	50	8,687	1	165,164	12	1,321,366
1990	188,842	13	247,104	17	795,528	55	7,219	1	203,508	14	1,442,201
1991	160,889	10	290,006	17	1,006,764	60	8,004	0	203,129	12	1,668,792
1992	199,688	12	259,762	16	975,738	61	6,844	0	163,536	10	1,605,568
1993	195,377	13	293,014	20	846,115	57	4,612	0	145,262	10	1,484,380
1994	221,367	14	262,721	16	971,566	60	7,493	0	162,850	10	1,625,997
1995	217,417	13	298,301	18	927,490	57	23,585	1	168,062	10	1,634,855
1996	215,466	13	301,279	18	896,443	55	17,807	1	208,032	13	1,639,027
1997	226,375	13	298,666	18	959,216	57	18,732	1	178,199	11	1,681,188
1998	251,197	12	323,645	16	1,257,392	61	19,099	1	213,779	10	2,065,112
1999	219,024	12	338,480	18	1,068,959	58	13,476	1	211,900	11	1,851,839
2000	247,904	13	319,854	16	1,143,294	58	25,845	1	235,670	12	1,972,567
2001	264,291	14	272,483	14	1,118,919	59	17,329	1	211,934	11	1,884,956
2002	281,369	14	286,202	14	1,265,454	61	16,129	1	215,317	10	2,064,471
2003	261,346	13	303,905	15	1,258,226	61	19,875	1	223,218	11	2,066,570
2004	284,782	13	322,179	14	1,354,241	60	23,445	1	260,314	12	2,244,961
2005	250,167	11	266,735	12	1,479,328	67	13,293	1	195,972	9	2,205,495
2006	255,328	11	257,594	11	1,512,944	67	10,098	0	212,599	9	2,248,563
2007	245,129	10	284,661	12	1,655,498	68	9,249	0	244,044	10	2,438,581
2008	247,389	10	269,551	11	1,709,351	69	11,740	0	252,565	10	2,490,596
2009	280,197	11	264,350	10	1,785,789	68	9,898	0	277,286	11	2,617,520
2010	274,105	11	270,123	11	1,703,133	68	11,320	0	260,010	10	2,518,691
2011	261,423	11	275,070	12	1,550,492	66	11,973	1	239,331	10	2,338,289
2012	274,476	10	242,960	9	1,844,078	69	14,018	1	298,991	11	2,674,523
2013	242,065	9	229,560	9	1,897,359	70	9,484	0	313,059	12	2,691,527
2014	264,636	9	206,939	7	2,059,006	71	6,677	0	347,784	12	2,885,042
2015	270,993	10	214,041	8	1,752,755	66	7,552	0	396,702	15	2,642,043
2016	238,876	9	198,398	7	1,850,479	68	7,206	0	411,414	15	2,706,373
2017	245,635	9	171,062	7	1,831,891	71	7,978	0	329,688	13	2,586,254
2018	256,946	9	231,555	8	1,902,340	68	7,462	0	412,680	15	2,810,983
2019	273,550	9	183,193	6	2,060,412	70	8,116	0	435,788	15	2,961,059

Table 3. LONGLINE catches in the WCPFC Statistical Area, by species

YEAR	ALBACORE		BIGEYE		SKIPJACK		YELLOWFIN		TOTAL
	TONNES	%	TONNES	%	TONNES	%	TONNES	%	
1960	31,387	24	43,467	33	0	0	55,020	42	129,874
1961	32,647	26	37,517	30	0	0	53,166	43	123,330
1962	37,358	29	35,895	28	4	0	55,547	43	128,804
1963	26,538	22	42,540	35	0	0	53,185	44	122,263
1964	26,240	26	30,989	30	5	0	45,247	44	102,481
1965	28,603	28	29,848	29	11	0	45,493	44	103,955
1966	51,588	36	31,984	22	52	0	61,654	42	145,278
1967	58,208	45	33,632	26	124	0	36,083	28	128,047
1968	46,226	38	27,757	23	83	0	46,070	38	120,136
1969	38,478	31	32,571	27	130	0	51,627	42	122,806
1970	48,981	35	34,965	25	1,608	1	55,806	39	141,360
1971	46,025	32	38,359	27	1,475	1	57,766	40	143,625
1972	47,774	30	51,040	32	1,544	1	61,175	38	161,533
1973	59,835	36	42,412	25	1,861	1	62,291	37	166,399
1974	39,299	27	45,653	31	2,124	1	58,116	40	145,192
1975	31,180	19	61,488	37	1,919	1	69,462	42	164,049
1976	45,022	23	73,325	37	2,096	1	77,570	39	198,013
1977	48,789	22	72,083	33	3,127	1	94,414	43	218,413
1978	42,260	20	56,364	27	3,233	2	110,202	52	212,059
1979	36,295	17	63,837	30	2,179	1	108,910	52	211,221
1980	42,343	18	62,537	27	632	0	125,113	54	230,625
1981	47,272	25	46,590	24	756	0	97,114	51	191,732
1982	43,876	24	48,578	27	972	1	86,149	48	179,575
1983	36,784	21	46,311	26	2,144	1	90,259	51	175,498
1984	31,277	19	52,976	33	870	1	76,988	47	162,111
1985	38,012	21	58,629	33	1,108	1	79,973	45	177,722
1986	41,702	25	56,989	34	1,439	1	68,999	41	169,129
1987	33,398	19	68,832	38	2,329	1	75,407	42	179,966
1988	41,694	21	68,288	34	1,937	1	88,855	44	200,774
1989	30,147	18	64,916	38	2,507	1	73,306	43	170,876
1990	32,170	17	77,009	41	363	0	79,300	42	188,842
1991	35,459	22	61,033	38	885	1	63,512	39	160,889
1992	45,551	23	75,966	38	432	0	77,739	39	199,688
1993	56,183	29	66,566	34	573	0	72,055	37	195,377
1994	59,629	27	79,175	36	379	0	82,184	37	221,367
1995	60,388	28	68,125	31	598	0	88,306	41	217,417
1996	61,590	29	58,054	27	3,935	2	91,887	43	215,466
1997	72,643	32	68,597	30	4,070	2	81,065	36	226,375
1998	80,042	32	85,048	34	5,030	2	81,077	32	251,197
1999	68,834	31	74,959	34	4,208	2	71,023	32	219,024
2000	69,582	28	76,912	31	4,559	2	96,851	39	247,904
2001	85,022	32	78,670	30	5,059	2	95,540	36	264,291
2002	89,894	32	92,381	33	3,450	1	95,644	34	281,369
2003	78,794	30	83,016	32	3,824	1	95,712	37	261,346
2004	76,967	27	99,705	35	4,051	1	104,059	37	284,782
2005	83,069	33	78,597	31	1,084	0	87,417	35	250,167
2006	85,246	33	83,560	33	1,528	1	84,994	33	255,328
2007	80,170	33	81,350	33	1,175	0	82,434	34	245,129
2008	79,039	32	83,365	34	803	0	84,182	34	247,389
2009	99,128	35	80,492	29	1,220	0	99,357	35	280,197
2010	101,820	37	72,721	27	1,192	0	98,372	36	274,105
2011	85,287	33	77,566	30	1,124	0	97,446	37	261,423
2012	100,835	37	83,971	31	2,004	1	87,666	32	274,476
2013	97,970	40	65,637	27	1,254	1	77,204	32	242,065
2014	87,047	33	75,335	28	1,879	1	100,375	38	264,636
2015	93,708	35	71,634	26	1,879	1	103,772	38	270,993
2016	79,027	33	62,495	26	5,642	2	91,712	38	238,876
2017	98,711	40	58,126	24	2,571	1	86,227	35	245,635
2018	86,447	34	68,610	27	4,162	2	97,727	38	256,946
2019	95,280	35	68,371	25	5,459	2	104,440	38	273,550

Table 4. POLE-AND-LINE catches in the WCPFC Statistical Area, by species

YEAR	ALBACORE		BIGEYE		SKIPJACK		YELLOWFIN		TOTAL
	TONNES	%	TONNES	%	TONNES	%	TONNES	%	
1960	0	0	1,500	2	70,428	95	1,872	3	73,800
1961	0	0	1,800	1	127,011	96	3,259	2	132,070
1962	0	0	800	1	152,387	97	4,225	3	157,412
1963	0	0	1,800	2	94,757	96	2,071	2	98,628
1964	0	0	1,143	1	137,106	96	5,074	4	143,323
1965	0	0	1,254	1	129,933	97	3,434	3	134,621
1966	0	0	1,108	1	215,600	98	2,192	1	218,900
1967	0	0	2,803	2	168,846	97	3,125	2	174,774
1968	16,597	9	2,272	1	162,379	88	2,706	1	183,954
1969	32,148	15	3,350	2	168,084	81	5,166	2	208,748
1970	24,485	11	3,178	1	197,873	86	4,606	2	230,142
1971	53,451	22	1,862	1	180,945	75	5,248	2	241,506
1972	60,691	25	1,762	1	172,827	71	7,465	3	242,745
1973	68,908	21	1,258	0	253,217	77	7,458	2	330,841
1974	73,676	20	1,039	0	289,202	78	6,582	2	370,499
1975	52,257	19	1,334	0	218,271	78	7,801	3	279,663
1976	85,436	22	3,423	1	276,582	72	17,186	4	382,627
1977	32,034	9	3,325	1	294,641	85	15,257	4	345,257
1978	59,977	15	3,337	1	331,401	81	12,767	3	407,482
1979	44,762	13	2,540	1	285,859	83	11,638	3	344,799
1980	46,843	12	2,916	1	333,597	84	15,142	4	398,498
1981	27,426	8	3,382	1	296,065	85	22,044	6	348,917
1982	29,615	9	4,993	2	264,726	84	17,123	5	316,457
1983	21,098	6	5,077	1	298,928	87	17,184	5	342,287
1984	26,015	6	4,557	1	366,811	88	17,633	4	415,016
1985	20,714	7	5,529	2	238,932	83	22,717	8	287,892
1986	16,096	4	4,133	1	322,665	89	17,970	5	360,864
1987	19,091	6	4,602	2	252,142	86	19,044	6	294,879
1988	6,216	2	5,890	2	295,325	90	20,566	6	327,997
1989	8,629	3	6,131	2	275,088	88	22,133	7	311,981
1990	8,777	4	5,985	2	211,573	86	20,769	8	247,104
1991	7,117	2	3,929	1	259,778	90	19,182	7	290,006
1992	13,899	5	4,055	2	218,765	84	23,043	9	259,762
1993	12,871	4	4,505	2	255,152	87	20,486	7	293,014
1994	26,456	10	5,251	2	209,636	80	21,378	8	262,721
1995	21,120	7	6,228	2	247,744	83	23,209	8	298,301
1996	20,302	7	7,940	3	242,486	80	30,551	10	301,279
1997	32,259	11	6,563	2	236,999	79	22,845	8	298,666
1998	22,962	7	6,405	2	266,772	82	27,506	8	323,645
1999	50,507	15	5,856	2	255,330	75	26,787	8	338,480
2000	21,652	7	6,838	2	264,407	83	26,957	8	319,854
2001	29,467	11	5,905	2	212,668	78	24,443	9	272,483
2002	48,472	17	6,109	2	207,488	72	24,133	8	286,202
2003	36,126	12	5,296	2	238,179	78	24,304	8	303,905
2004	32,365	10	9,238	3	249,936	78	30,640	10	322,179
2005	16,162	6	6,851	3	216,715	81	27,007	10	266,735
2006	15,429	6	9,781	4	208,731	81	23,653	9	257,594
2007	37,785	13	7,296	3	213,010	75	26,570	9	284,661
2008	19,072	7	9,204	3	218,570	81	22,705	8	269,551
2009	31,193	12	7,916	3	201,323	76	23,918	9	264,350
2010	19,575	7	7,027	3	223,409	83	20,112	7	270,123
2011	25,734	9	5,655	2	206,843	75	36,838	13	275,070
2012	33,783	14	3,934	2	170,538	70	34,705	14	242,960
2013	33,602	15	5,009	2	169,025	74	21,924	10	229,560
2014	29,459	14	4,714	2	148,684	72	24,082	12	206,939
2015	21,318	10	5,687	3	151,317	71	35,719	17	214,041
2016	14,475	7	3,933	2	156,603	79	23,387	12	198,398
2017	20,905	12	2,215	1	123,013	72	24,929	15	171,062
2018	17,930	8	4,143	2	183,267	79	26,215	11	231,555
2019	17,957	10	1,400	1	126,273	69	37,563	21	183,193

Table 5. PURSE SEINE catch estimates in the WCPFC Statistical Area, by species.
(original catches have been adjusted with species compositions determined from observer grab samples corrected for size selectivity bias)

YEAR	ALBACORE		BIGEYE		SKIPJACK		YELLOWFIN		TOTAL
	TONNES	%	TONNES	%	TONNES	%	TONNES	%	
1960	0	0	58	1	3,728	71	1,438	28	5,224
1961	7	0	63	0	11,693	80	2,777	19	14,540
1962	53	0	173	1	11,674	62	6,975	37	18,875
1963	59	0	6	0	9,592	80	2,277	19	11,934
1964	128	0	231	1	25,006	86	3,647	13	29,012
1965	11	0	201	2	4,657	54	3,752	44	8,621
1966	111	1	9	0	10,949	65	5,844	35	16,913
1967	89	1	61	0	10,937	75	3,421	24	14,508
1968	267	2	193	1	7,636	50	7,047	47	15,143
1969	521	5	50	1	5,043	53	3,869	41	9,483
1970	317	2	578	4	7,565	47	7,762	48	16,222
1971	902	4	680	3	13,783	56	9,146	37	24,511
1972	277	1	659	2	18,117	62	9,978	34	29,031
1973	1,353	4	734	2	19,310	53	14,872	41	36,269
1974	161	1	1,078	4	11,150	38	17,159	58	29,548
1975	159	1	1,235	4	13,615	49	12,676	46	27,685
1976	1,109	3	1,640	4	22,844	56	15,177	37	40,770
1977	669	1	2,026	4	34,071	64	16,725	31	53,491
1978	1,115	2	2,194	4	34,220	66	14,511	28	52,040
1979	125	0	2,225	2	58,368	65	29,384	33	90,102
1980	329	0	2,762	2	79,280	68	34,383	29	116,754
1981	252	0	9,752	6	92,260	58	56,294	36	158,558
1982	561	0	15,436	6	156,905	61	82,589	32	255,491
1983	350	0	23,378	5	288,065	65	130,361	29	442,154
1984	3,380	1	24,057	5	300,852	65	133,986	29	462,275
1985	1,533	0	17,262	4	267,346	65	123,395	30	409,536
1986	1,542	0	25,598	5	324,269	68	123,428	26	474,837
1987	1,205	0	32,001	6	340,720	63	170,053	31	543,979
1988	1,208	0	26,024	4	451,025	74	130,741	21	608,998
1989	2,521	0	28,907	4	432,291	65	200,939	30	664,658
1990	1,995	0	36,046	5	530,009	67	227,478	29	795,528
1991	2,652	0	40,965	4	695,581	69	267,566	27	1,006,764
1992	4,104	0	52,308	5	636,545	65	282,781	29	975,738
1993	2,889	0	39,410	5	555,530	66	248,286	29	846,115
1994	2,026	0	37,670	4	673,734	69	258,136	27	971,566
1995	1,177	0	28,317	3	659,746	71	238,250	26	927,490
1996	581	0	29,650	3	678,478	76	187,734	21	896,443
1997	1,068	0	55,465	6	613,004	64	289,679	30	959,216
1998	1,554	0	51,309	4	890,911	71	313,618	25	1,257,392
1999	6,872	1	62,870	6	727,716	68	271,501	25	1,068,959
2000	2,408	0	53,946	5	824,702	72	262,238	23	1,143,294
2001	974	0	45,131	4	797,842	71	274,972	25	1,118,919
2002	3,303	0	49,403	4	963,666	76	249,082	20	1,265,454
2003	627	0	47,011	4	903,760	72	306,828	24	1,258,226
2004	7,200	1	59,968	4	977,884	72	309,189	23	1,354,241
2005	850	0	60,176	4	1,073,418	73	344,884	23	1,479,328
2006	364	0	57,288	4	1,121,843	74	333,449	22	1,512,944
2007	5,682	0	58,532	4	1,257,872	76	333,412	20	1,655,498
2008	825	0	66,487	4	1,224,453	72	417,586	24	1,709,351
2009	2,077	0	64,617	4	1,387,437	78	331,658	19	1,785,789
2010	330	0	57,496	3	1,292,424	76	352,883	21	1,703,133
2011	480	0	73,850	5	1,163,066	75	313,096	20	1,550,492
2012	4,193	0	64,206	3	1,378,708	75	396,971	22	1,844,078
2013	1,988	0	70,963	4	1,461,837	77	362,571	19	1,897,359
2014	2,009	0	69,074	3	1,609,784	78	378,139	18	2,059,006
2015	1,072	0	51,257	3	1,380,255	79	320,171	18	1,752,755
2016	3,689	0	62,565	3	1,375,647	74	408,578	22	1,850,479
2017	1,261	0	58,265	3	1,273,543	70	498,822	27	1,831,891
2018	3,024	0	64,757	3	1,452,866	76	381,693	20	1,902,340
2019	3,102	0	50,819	2	1,641,920	80	364,571	18	2,060,412

Table 6. Catches of target tunas in the WCPFC Statistical Area, by flag

YEAR	AUSTRALIA	BELIZE	CANADA	CHINA	COOK ISLANDS	ECUADOR	EL SALVADOR	FEDERATED STATES OF MICRONESIA
1960	–	–	–	–	–	–	–	–
1961	–	–	–	–	–	–	–	–
1962	–	–	–	–	–	–	–	–
1963	–	–	–	–	–	–	–	–
1964	–	–	–	–	–	–	–	–
1965	–	–	–	–	–	–	–	–
1966	–	–	–	–	–	–	–	–
1967	–	–	–	–	–	–	–	–
1968	–	–	–	–	–	–	–	–
1969	–	–	–	–	–	–	–	–
1970	100	–	–	–	–	–	–	–
1971	100	–	–	–	–	–	–	–
1972	100	–	–	–	–	–	–	–
1973	100	–	–	–	–	–	–	–
1974	100	–	–	–	–	–	–	–
1975	2,000	–	–	–	–	–	–	–
1976	147	–	–	–	–	–	–	–
1977	131	–	–	–	–	–	–	–
1978	375	–	–	–	–	–	–	–
1979	100	–	–	–	–	–	–	–
1980	117	–	–	–	–	–	–	–
1981	357	–	–	–	–	–	–	–
1982	238	–	–	–	–	–	–	–
1983	230	–	–	–	–	–	–	–
1984	147	–	–	–	–	–	–	–
1985	18	–	–	–	–	–	–	–
1986	101	–	–	–	–	–	–	–
1987	1,455	–	–	–	–	–	–	–
1988	1,753	–	235	44	–	–	–	–
1989	2,836	–	235	144	–	–	–	–
1990	6,983	–	235	453	–	–	–	–
1991	9,380	–	235	1,007	–	–	–	11,339
1992	9,524	–	235	2,715	–	–	–	15,472
1993	7,211	–	235	6,419	–	–	–	16,908
1994	5,415	–	235	12,677	32	–	–	20,941
1995	6,288	54	235	10,586	63	–	–	6,759
1996	5,249	129	136	6,026	59	–	–	7,394
1997	7,550	77	149	3,664	–	–	–	8,254
1998	5,153	276	167	3,272	22	–	–	14,179
1999	7,551	211	253	7,515	56	–	–	10,881
2000	6,997	270	351	6,244	335	3,992	–	21,688
2001	5,279	7,143	206	9,947	206	1,057	600	17,646
2002	5,232	3,385	144	15,632	770	427	1,488	20,607
2003	5,809	2,697	–	42,210	2,462	1,562	74	30,829
2004	4,200	943	63	42,606	3,207	3,051	–	28,471
2005	3,093	1,056	72	62,734	3,125	5,193	–	28,302
2006	5,030	632	135	77,382	2,841	9,523	–	10,774
2007	4,404	595	27	73,698	3,266	9,187	6,025	15,440
2008	3,969	225	–	86,451	2,817	25,415	10,962	19,424
2009	3,646	190	–	119,639	2,054	4,428	8,824	21,154
2010	2,566	127	–	83,241	3,058	8,451	7,371	24,130
2011	2,924	220	1	105,275	3,636	18,045	12,226	28,785
2012	2,538	194	–	91,302	5,382	23,145	11,411	38,983
2013	2,613	252	–	121,299	1,948	21,442	13,272	27,053
2014	2,936	–	–	89,367	2,032	17,215	17,480	42,710
2015	3,938	–	–	72,794	1,764	11,378	7,229	61,207
2016	3,500	–	–	41,194	1,910	3,925	3,001	77,420
2017	2,950	–	55	60,276	3,638	13,571	4,319	89,848
2018	2,417	–	–	53,846	3,985	22,446	4,016	120,084
2019	3,036	–	–	72,375	5,743	25,136	2,939	172,940

Table 6 continued

YEAR	FIJI ISLANDS	FRENCH POLYNESIA	INDONESIA	JAPAN	KIRIBATI	REPUBLIC OF KOREA	MARSHALL ISLANDS	MEXICO
1960	—	—	7,415	206,606	—	744	—	—
1961	—	—	8,054	269,191	—	385	—	—
1962	—	—	8,749	302,176	—	708	—	—
1963	—	—	9,505	228,717	—	1,955	—	—
1964	—	—	10,327	270,506	—	2,527	—	—
1965	—	—	11,223	232,844	—	7,078	—	—
1966	—	—	12,198	355,838	—	13,405	—	—
1967	—	—	13,260	281,568	—	14,469	—	—
1968	—	—	14,417	273,603	—	10,794	—	—
1969	—	—	15,677	296,814	—	17,077	—	—
1970	—	—	17,600	325,840	—	16,927	—	—
1971	—	—	18,100	319,721	—	16,541	—	—
1972	—	—	28,600	341,855	—	17,678	—	—
1973	—	—	32,500	418,048	—	25,938	—	—
1974	12	—	33,779	429,014	—	14,105	—	—
1975	11	—	34,378	358,037	—	29,343	—	—
1976	742	—	33,375	474,987	—	44,464	—	—
1977	1,711	—	37,235	459,317	—	43,722	—	—
1978	2,524	—	40,024	513,391	—	33,102	—	—
1979	3,494	696	50,973	466,434	—	41,915	—	—
1980	2,496	936	58,280	522,843	1,812	46,096	—	—
1981	5,836	1,001	66,579	460,646	2,376	33,310	—	—
1982	4,428	1,034	72,360	501,943	2,269	39,684	—	—
1983	3,741	836	81,685	554,560	3,406	37,589	—	468
1984	4,572	1,250	91,802	639,034	3,843	33,293	—	6,601
1985	3,946	836	99,918	511,606	2,531	44,292	—	—
1986	3,125	961	104,027	590,884	3,226	63,034	—	—
1987	3,889	878	131,376	504,820	2,246	91,201	—	—
1988	3,891	715	152,705	599,082	3,284	113,653	—	—
1989	5,189	856	165,050	517,619	4,094	139,904	—	—
1990	3,830	2,109	174,573	471,098	2,407	204,399	—	—
1991	5,298	2,335	178,542	490,676	2,036	247,950	—	—
1992	4,790	2,019	205,267	472,794	2,363	213,553	9	—
1993	4,966	2,387	188,046	516,859	2,104	150,165	137	—
1994	5,937	2,804	208,581	473,787	3,131	226,531	48	—
1995	7,009	3,343	222,269	481,106	5,423	206,176	22	—
1996	6,803	3,583	344,955	417,585	6,645	174,948	—	—
1997	4,354	4,564	256,670	507,798	7,021	188,667	—	—
1998	4,013	5,710	338,881	543,367	9,389	247,929	—	—
1999	4,075	5,200	321,618	482,046	9,793	173,490	—	—
2000	9,660	6,833	342,203	498,958	14,726	207,498	7,560	—
2001	11,309	7,733	314,888	439,331	5,400	216,691	35,774	—
2002	11,551	7,347	302,659	451,896	9,830	254,593	38,952	—
2003	10,854	6,309	308,731	469,809	6,898	221,079	37,875	—
2004	17,312	5,496	406,483	441,599	6,661	212,655	46,676	—
2005	15,477	5,089	247,514	481,851	9,165	237,353	56,164	—
2006	15,472	5,938	285,844	445,977	6,723	274,859	42,349	—
2007	10,042	6,408	321,890	472,400	18,019	278,481	59,409	—
2008	13,627	5,673	334,585	434,689	18,373	275,132	33,013	—
2009	16,828	6,878	388,635	400,816	34,004	310,139	43,973	—
2010	12,545	6,250	358,254	431,352	38,947	300,213	57,225	—
2011	16,307	6,028	397,442	369,727	59,611	231,570	90,544	—
2012	14,978	7,273	443,316	397,608	74,108	290,293	72,422	—
2013	12,782	6,695	526,236	378,875	77,782	245,372	77,768	—
2014	13,663	7,175	482,917	355,845	114,156	292,011	75,896	—
2015	13,085	7,403	432,078	334,108	142,623	289,434	86,869	—
2016	14,256	6,666	525,633	304,671	171,089	299,174	62,212	—
2017	17,145	6,350	468,448	301,503	159,386	265,540	67,010	—
2018	13,692	7,073	526,695	323,002	194,789	289,324	75,307	—
2019	14,844	7,406	500,885	310,023	211,954	344,671	98,346	—

Table 6 continued

YEAR	NAURU	NEW CALEDONIA	NEW ZEALAND	NIUE	PALAU	PAPUA NEW GUINEA	PHILIPPINES	EU-PORTUGAL
1960	—	—	—	—	—	—	20,585	—
1961	—	—	—	—	—	—	21,735	—
1962	—	—	—	—	—	—	22,957	—
1963	—	—	—	—	—	—	24,252	—
1964	—	—	—	—	1,166	—	25,626	—
1965	—	—	—	—	2,670	—	27,084	—
1966	—	—	—	—	2,686	—	28,632	—
1967	—	—	5	—	3,406	—	30,275	—
1968	—	—	14	—	5,056	—	32,021	—
1969	—	—	—	—	4,762	—	33,875	—
1970	—	—	50	—	8,082	2,428	52,000	—
1971	—	—	—	—	2,143	16,974	57,200	—
1972	—	—	268	—	1,519	13,130	60,700	—
1973	—	—	484	—	2,350	28,216	70,900	—
1974	—	—	899	—	6,808	41,630	81,188	—
1975	—	—	647	—	6,269	17,369	84,450	—
1976	—	—	25	—	5,323	32,921	73,653	—
1977	—	—	621	—	4,012	24,115	118,149	—
1978	—	—	1,701	—	9,694	48,859	87,319	—
1979	—	—	830	—	5,688	26,857	94,308	—
1980	—	—	1,519	—	6,576	33,994	77,505	—
1981	—	229	2,111	—	9,411	31,412	94,616	—
1982	—	868	2,436	—	4,053	—	104,047	—
1983	—	461	6,565	—	—	—	118,529	—
1984	—	150	7,005	—	—	2,744	105,216	—
1985	—	281	5,713	—	97	9,300	137,308	—
1986	—	367	6,793	—	131	—	145,097	—
1987	—	1,102	5,035	—	161	—	141,461	—
1988	—	1,092	3,923	—	157	—	124,786	—
1989	—	871	10,323	—	77	—	151,124	—
1990	—	1,730	7,120	—	88	—	202,215	—
1991	—	1,536	7,765	—	—	—	221,817	—
1992	—	1,092	4,524	—	213	—	165,652	—
1993	—	1,294	4,415	—	206	8	134,922	—
1994	—	1,355	8,513	—	184	1,381	172,558	—
1995	—	1,274	8,147	—	100	12,700	198,613	—
1996	—	1,201	10,194	—	100	10,572	205,003	—
1997	—	977	10,451	—	107	19,400	208,767	—
1998	—	1,543	15,154	—	100	50,727	235,586	—
1999	—	1,616	10,141	—	100	38,980	226,319	—
2000	11	1,662	18,918	—	240	68,818	234,519	—
2001	13	1,718	17,533	—	62	92,806	210,786	—
2002	7	1,926	38,574	—	4	124,705	226,864	—
2003	20	2,007	30,614	—	20	159,622	264,106	—
2004	3	2,189	33,886	6	35	225,441	271,760	—
2005	—	2,114	27,917	105	—	235,438	274,247	—
2006	—	1,807	27,410	286	—	233,169	291,564	—
2007	—	1,770	38,969	306	—	230,015	320,567	—
2008	3	1,993	33,878	435	—	205,682	360,187	—
2009	8	2,187	30,618	189	—	213,018	328,047	—
2010	4	2,488	26,950	110	—	208,253	285,594	—
2011	11	2,362	25,312	—	—	164,558	193,915	7
2012	11	2,337	21,661	—	—	240,055	233,386	18
2013	19	2,314	27,687	—	—	194,301	229,394	175
2014	19	2,429	22,907	—	—	236,823	287,190	94
2015	19	2,504	9,425	—	—	215,764	247,959	21
2016	19	2,361	7,703	—	—	302,692	214,803	16
2017	19	2,382	10,314	—	2,507	308,491	200,065	—
2018	8,899	2,280	9,500	—	2,942	313,871	154,919	—
2019	24,892	2,750	11,100	—	3,471	267,291	159,854	—

Table 6 continued

YEAR	RUSSIA	SAMOA	SENEGAL	SOLOMON ISLANDS	EU-SPAIN	CHINESE TAIPEI	TONGA
1960	-	-	-	-	-	4,035	-
1961	-	-	-	-	-	4,485	-
1962	-	-	-	-	-	4,779	-
1963	-	-	-	-	-	4,642	-
1964	-	-	-	-	-	5,482	-
1965	-	-	-	-	-	7,524	-
1966	-	-	-	-	-	14,812	-
1967	-	-	-	-	-	25,911	-
1968	-	-	-	-	-	35,302	-
1969	-	-	-	-	-	30,096	-
1970	-	-	-	-	-	33,887	-
1971	-	-	-	4,711	-	42,640	-
1972	-	-	-	7,905	-	48,612	-
1973	-	-	-	6,624	-	51,807	-
1974	-	-	-	10,332	-	37,501	-
1975	-	-	-	7,094	-	43,804	-
1976	-	-	-	15,763	-	43,546	-
1977	-	-	-	12,202	-	50,858	-
1978	-	-	-	18,353	-	46,606	-
1979	-	-	-	24,289	-	43,450	-
1980	-	-	-	23,241	-	48,323	-
1981	-	-	-	22,832	-	37,900	-
1982	-	-	-	20,071	-	32,644	205
1983	-	-	-	33,432	-	44,459	208
1984	-	-	-	35,615	-	56,406	218
1985	2,111	-	-	29,997	-	55,987	233
1986	4,175	-	-	42,249	-	65,658	252
1987	8,995	-	-	29,438	-	84,558	299
1988	6,189	-	-	40,513	-	117,865	276
1989	4,935	-	-	34,262	-	135,124	235
1990	2,126	-	-	26,612	-	164,640	192
1991	3,715	-	-	46,888	-	213,007	197
1992	2,126	-	-	30,559	-	263,185	225
1993	8,714	300	-	28,006	-	207,231	329
1994	6,722	736	-	33,925	-	223,590	411
1995	-	2,151	-	49,666	-	228,798	461
1996	-	2,375	-	38,697	-	226,436	579
1997	-	5,498	-	47,442	-	217,026	663
1998	-	6,820	-	48,378	1,624	305,354	833
1999	-	5,790	-	45,661	8,614	251,034	1,084
2000	-	5,389	-	12,929	12,896	279,197	1,161
2001	-	5,864	-	17,217	2,403	285,281	1,733
2002	-	4,927	-	18,537	2,288	318,298	1,672
2003	-	2,944	-	26,364	4,659	258,537	971
2004	-	1,967	-	24,904	5,587	260,646	388
2005	-	1,626	6	20,023	3,453	244,345	629
2006	-	2,564	15	29,462	11,825	255,610	759
2007	-	3,559	6	21,244	23,749	276,957	861
2008	-	2,796	-	17,378	36,358	247,220	592
2009	-	3,422	-	17,883	26,687	242,295	271
2010	-	3,090	-	26,907	29,500	253,135	128
2011	-	1,932	-	28,233	39,468	229,095	224
2012	-	2,353	-	28,635	32,199	247,238	171
2013	-	2,022	-	26,435	45,038	260,446	147
2014	-	1,102	-	62,034	40,538	275,356	250
2015	-	1,160	-	61,580	33,272	234,863	357
2016	-	1,273	-	61,064	8,782	236,116	400
2017	-	3,230	-	46,767	11,753	225,371	435
2018	-	2,191	-	61,639	10,481	241,992	262
2019	-	1,731	-	84,701	10,293	289,445	235

Table 6 continued

YEAR	TOKELAU	TUVALU	UNITED STATES OF AMERICA	VANUATU	VIETNAM	WALLIS ET FUTUNA	EASTERN PACIFIC NEI	TOTAL
1960	–	–	708	–	–	–	–	240,093
1961	–	–	626	–	–	–	–	304,476
1962	–	–	669	–	–	–	–	340,038
1963	–	–	549	–	–	–	–	269,620
1964	–	–	516	–	–	–	–	316,150
1965	–	–	501	–	–	–	–	288,924
1966	–	–	513	–	–	–	–	428,084
1967	–	–	446	–	–	–	–	369,340
1968	–	–	367	–	–	–	–	371,574
1969	–	–	439	–	–	–	–	398,740
1970	–	–	493	–	–	–	–	457,407
1971	–	–	437	–	–	–	–	478,567
1972	–	–	419	–	–	–	–	520,786
1973	–	–	307	–	–	–	–	637,274
1974	–	–	347	–	–	–	–	655,715
1975	–	–	310	–	–	–	–	583,712
1976	–	–	1,071	–	–	–	–	726,017
1977	–	–	1,359	–	–	–	672	754,104
1978	–	–	1,477	–	–	–	926	804,351
1979	–	–	11,852	–	–	–	734	771,620
1980	–	–	13,483	–	–	–	114	837,335
1981	–	–	40,495	–	–	–	98	809,209
1982	–	216	75,494	–	–	–	75	862,065
1983	–	337	181,593	–	–	–	2,167	1,070,266
1984	–	540	162,380	–	–	–	10,188	1,161,004
1985	–	4	110,031	–	–	–	1,221	1,015,430
1986	–	390	123,517	–	–	–	–	1,153,987
1987	–	632	145,072	–	–	–	405	1,153,023
1988	–	1,090	122,380	–	–	–	–	1,293,633
1989	–	149	148,339	–	–	–	–	1,321,366
1990	–	90	171,301	–	–	–	–	1,442,201
1991	–	29	225,040	–	–	–	–	1,668,792
1992	–	8	209,243	–	–	–	–	1,605,568
1993	–	–	203,518	–	–	–	–	1,484,380
1994	–	–	215,683	820	–	–	–	1,625,997
1995	–	–	176,125	7,276	–	–	211	1,634,855
1996	–	–	158,219	11,497	–	–	642	1,639,027
1997	–	–	154,149	26,164	–	–	1,776	1,681,188
1998	–	–	184,278	39,423	–	–	2,934	2,065,112
1999	–	–	191,739	46,162	–	–	1,910	1,851,839
2000	–	–	135,410	37,545	33,632	–	2,925	1,972,567
2001	–	–	128,503	11,917	35,400	–	510	1,884,956
2002	8	–	136,190	28,031	37,683	–	244	2,064,471
2003	3	–	101,004	28,443	37,458	–	2,600	2,066,570
2004	3	–	79,395	66,793	50,521	–	2,014	2,244,961
2005	6	19	97,870	88,391	52,409	–	709	2,205,495
2006	6	12	81,165	76,148	52,573	–	709	2,248,563
2007	8	26	103,576	82,758	54,210	–	709	2,438,581
2008	8	22	221,185	47,892	49,903	–	709	2,490,596
2009	12	4,456	292,702	49,567	44,241	–	709	2,617,520
2010	4	10,582	256,977	38,865	41,665	–	709	2,518,691
2011	4	10,806	214,923	34,792	49,584	13	709	2,338,289
2012	229	16,469	272,718	37,825	65,556	–	709	2,674,523
2013	177	11,896	265,120	34,327	78,631	9	–	2,691,527
2014	86	6,355	323,264	32,343	80,842	7	–	2,885,042
2015	179	5,129	249,172	27,660	89,063	6	–	2,642,043
2016	179	6,676	212,655	13,901	123,076	6	–	2,706,373
2017	67	6,446	177,234	18,504	112,626	4	–	2,586,254
2018	55	11,788	208,919	24,025	120,535	9	–	2,810,983
2019	67	5,522	176,230	43,846	109,315	18	–	2,961,059

Table 7. Catches of albacore in the Pacific Ocean. "OTHER" includes purse seine catches.

YEAR	SOUTH PACIFIC OCEAN					NORTH PACIFIC OCEAN					TOTAL
	LOONGLINE	POLE-AND-LINE	TROLL	OTHER	SUBTOTAL	LOONGLINE	POLE-AND-LINE	TROLL	OTHER	SUBTOTAL	
1960	22,248	45	0	0	22,293	17,373	25,156	20,105	769	63,403	85,696
1961	23,742	0	0	0	23,742	17,442	21,476	12,059	1,631	52,608	76,350
1962	35,219	0	0	0	35,219	15,771	9,814	19,753	1,926	47,264	82,483
1963	31,095	16	0	0	31,111	13,471	28,852	25,145	1,438	68,906	100,017
1964	22,824	0	0	0	22,824	15,488	27,269	18,391	1,271	62,419	85,243
1965	25,455	0	0	0	25,455	13,965	41,908	16,557	863	73,293	98,748
1966	38,661	0	0	0	38,661	25,329	24,430	15,377	1,285	66,421	105,082
1967	43,952	0	5	0	43,957	29,516	34,594	17,975	1,316	83,401	127,358
1968	32,368	0	14	0	32,382	24,670	21,503	21,462	2,327	69,962	102,344
1969	24,805	0	0	0	24,805	18,654	34,908	20,192	1,838	75,592	100,397
1970	34,775	100	50	0	34,925	17,747	28,679	21,422	1,656	69,504	104,429
1971	38,530	100	0	0	38,630	13,243	55,028	22,272	2,436	92,979	131,609
1972	39,131	122	268	0	39,521	16,121	64,319	27,521	1,659	109,620	149,141
1973	46,705	141	484	0	47,330	16,902	71,003	17,053	2,006	106,964	154,294
1974	33,039	112	898	0	34,049	13,963	78,341	21,509	1,384	115,197	149,246
1975	22,849	105	646	0	23,600	14,293	55,395	19,043	1,219	89,950	113,550
1976	28,957	100	25	0	29,082	17,945	88,036	16,183	3,217	125,381	154,463
1977	38,019	100	621	0	38,740	17,383	33,431	10,022	2,264	63,100	101,840
1978	32,890	100	1,686	0	34,676	13,573	60,827	16,636	8,064	99,100	133,776
1979	26,162	100	814	0	27,076	14,632	44,965	7,302	4,211	71,110	98,186
1980	30,972	101	1,468	0	32,541	15,596	47,124	7,768	4,707	75,195	107,736
1981	32,694	0	2,085	5	34,784	18,701	28,174	12,837	11,526	71,238	106,022
1982	28,347	1	2,434	6	30,788	17,754	30,039	6,713	13,963	68,469	99,257
1983	24,309	0	744	39	25,092	16,074	21,705	9,584	7,676	55,039	80,131
1984	20,340	2	2,773	1,589	24,704	15,662	27,043	9,354	18,670	70,729	95,433
1985	27,138	0	3,253	1,937	32,328	14,649	22,212	6,471	14,947	58,279	90,607
1986	32,641	0	2,003	1,946	36,590	13,140	16,528	4,738	10,938	45,344	81,934
1987	21,979	9	2,134	930	25,052	15,353	19,240	2,870	11,509	48,972	74,024
1988	28,288	0	4,296	5,283	37,867	15,453	6,814	4,367	18,968	45,602	83,469
1989	18,738	0	8,370	21,968	49,076	13,997	8,683	2,000	19,986	44,666	93,742
1990	21,304	245	6,975	7,538	36,062	16,260	8,647	2,905	26,159	53,971	90,033
1991	26,292	14	7,805	1,489	35,600	17,708	7,103	1,984	10,798	37,593	73,193
1992	32,014	11	6,578	65	38,668	19,689	13,888	4,934	16,580	55,091	93,759
1993	30,998	74	4,296	70	35,438	30,901	12,797	6,748	4,112	54,558	89,996
1994	34,998	67	7,164	89	42,318	30,749	26,389	13,134	3,486	73,758	116,076
1995	30,508	139	7,716	104	38,467	32,882	21,061	10,758	1,725	66,426	104,893
1996	26,763	30	7,410	156	34,359	39,290	20,296	21,849	1,070	82,505	116,864
1997	34,657	21	4,679	133	39,490	47,887	32,311	18,674	2,736	101,608	141,098
1998	44,152	36	6,280	85	50,553	47,833	23,005	20,074	3,237	94,149	144,702
1999	35,959	138	3,447	74	39,618	46,064	50,429	13,853	11,155	121,501	161,119
2000	40,836	102	6,455	139	47,532	40,528	21,619	15,245	4,985	82,377	129,909
2001	57,719	37	5,253	199	63,208	36,912	29,569	16,738	3,002	86,221	149,429
2002	70,264	18	4,661	150	75,093	33,001	48,832	16,323	6,219	104,375	179,468
2003	57,323	12	5,984	130	63,449	32,383	36,173	21,886	3,184	93,626	157,075
2004	57,440	110	4,614	123	62,287	29,248	32,380	22,255	8,977	92,860	155,147
2005	60,210	29	3,503	137	63,879	32,551	16,199	14,067	3,183	66,000	129,879
2006	59,614	29	2,884	188	62,715	33,804	15,423	18,931	1,137	69,295	132,010
2007	56,664	17	2,014	60	58,755	31,320	37,789	18,646	6,438	94,193	152,948
2008	59,073	12	3,502	160	62,747	27,870	19,060	17,901	2,925	67,756	130,503
2009	80,664	21	2,031	211	82,927	28,290	33,390	19,167	2,755	83,602	166,529
2010	84,959	14	2,139	190	87,302	27,843	19,561	19,749	888	68,041	155,343
2011	62,599	30	3,189	233	66,051	34,938	26,704	16,895	1,077	79,614	145,665
2012	84,928	41	2,962	248	88,179	35,386	33,742	17,256	4,797	91,181	179,360
2013	81,537	26	3,226	248	85,037	30,323	33,568	17,709	3,248	84,848	169,885
2014	79,542	26	2,403	248	82,219	28,562	29,433	18,347	3,338	79,680	161,899
2015	79,249	24	2,581	263	82,117	31,318	21,294	16,188	2,389	71,189	153,306
2016	67,393	40	2,114	333	69,880	24,122	14,435	13,676	3,568	55,801	125,681
2017	90,779	14	2,423	199	93,415	25,740	20,891	9,101	1,973	57,705	151,120
2018	79,128	16	2,702	380	82,226	22,697	17,875	10,523	3,340	54,435	136,661
2019	82,070	43	3,425	1,168	86,706	28,951	17,889	10,277	4,527	61,644	148,350

Table 8. Catches of bigeye in the Pacific Ocean.

YEAR	WESTERN AND CENTRAL PACIFIC OCEAN					EASTERN PACIFIC OCEAN					TOTAL
	LOONGLINE	POLE-AND-LINE	PURSE SEINE	OTHER	SUBTOTAL	LOONGLINE	POLE-AND-LINE	PURSE SEINE	OTHER	SUBTOTAL	
1960	43,467	1,500	58	0	45,025	17,722	0	24	0	17,746	62,771
1961	37,517	1,800	63	0	39,380	52,431	106	105	0	52,642	92,022
1962	35,895	800	173	0	36,868	45,050	318	302	0	45,670	82,538
1963	42,540	1,800	6	0	44,346	66,617	140	0	0	66,757	111,103
1964	30,978	1,143	231	28	32,380	46,279	127	0	0	46,406	78,786
1965	29,844	1,254	201	30	31,329	29,164	231	0	0	29,395	60,724
1966	31,949	1,108	9	86	33,152	34,800	292	210	0	35,302	68,454
1967	32,791	2,803	61	253	35,908	35,878	1,305	1,697	0	38,880	74,788
1968	27,199	2,272	193	204	29,868	35,233	115	4,618	0	39,966	69,834
1969	32,371	3,350	50	62	35,833	52,071	0	1,093	0	53,164	88,997
1970	34,348	3,178	744	2,802	41,072	33,341	0	2,411	0	35,752	76,824
1971	36,798	1,862	866	3,057	42,583	29,804	75	4,359	18	34,256	76,839
1972	49,334	1,762	852	3,497	55,445	36,128	126	3,971	0	40,225	95,670
1973	40,285	1,258	965	4,218	46,726	50,777	236	3,342	0	54,355	101,081
1974	41,787	1,039	1,346	4,719	48,891	36,961	0	1,554	0	38,515	87,406
1975	57,623	1,334	1,509	4,938	65,404	41,733	36	6,574	0	48,343	113,747
1976	68,514	3,423	1,871	4,123	77,931	54,290	75	17,212	7	71,584	149,515
1977	66,249	3,325	2,353	5,627	77,554	74,086	2	11,161	0	85,249	162,803
1978	50,502	3,337	2,294	4,231	60,364	70,659	0	18,539	0	89,198	149,562
1979	57,319	2,540	2,576	4,615	67,050	55,435	0	12,097	1	67,533	134,583
1980	57,233	2,916	3,185	3,663	66,997	64,335	0	21,938	130	86,403	153,400
1981	42,331	3,382	10,132	4,244	60,089	53,416	0	14,921	7	68,344	128,433
1982	45,896	4,993	15,573	4,005	70,467	53,365	42	6,939	3	60,349	130,816
1983	42,453	5,077	23,711	4,371	75,612	60,043	39	4,575	37	64,694	140,306
1984	47,516	4,557	24,479	4,625	81,177	46,394	2	8,861	11	55,268	136,445
1985	52,454	5,529	17,877	5,560	81,420	66,325	2	6,056	15	72,398	153,818
1986	47,926	4,133	26,088	5,856	84,003	102,425	0	2,686	74	105,185	189,188
1987	60,147	4,602	32,290	5,263	102,302	100,121	0	1,177	49	101,347	203,649
1988	50,701	5,890	26,423	6,404	89,418	72,758	5	1,535	15	74,313	163,731
1989	54,773	6,131	29,342	7,012	97,258	70,963	0	2,030	1	72,994	170,252
1990	66,976	5,985	36,459	7,708	117,128	98,871	0	5,921	59	104,851	221,979
1991	48,875	3,929	41,452	8,859	103,115	104,195	31	4,870	25	109,121	212,236
1992	64,018	4,055	52,577	5,931	126,581	84,808	0	7,179	13	92,000	218,581
1993	58,348	4,505	39,565	5,514	107,932	72,498	0	9,657	35	82,190	190,122
1994	68,326	5,251	37,831	7,661	119,069	71,360	0	34,899	806	107,065	226,134
1995	58,821	6,228	28,442	8,284	101,775	58,269	0	45,321	1,369	104,959	206,734
1996	49,936	7,940	29,776	10,228	97,880	46,958	0	61,311	748	109,017	206,897
1997	61,240	6,563	55,722	7,671	131,196	52,580	0	64,272	20	116,872	248,068
1998	76,424	6,405	51,292	9,190	143,311	46,375	0	44,129	628	91,132	234,443
1999	68,629	5,856	62,263	8,915	145,663	36,450	0	51,158	538	88,146	233,809
2000	65,952	6,838	54,412	9,942	137,144	47,605	0	94,640	253	142,498	279,642
2001	66,812	5,905	45,420	9,154	127,291	68,755	0	61,156	19	129,930	257,221
2002	82,471	6,109	48,898	9,549	147,027	74,424	0	57,440	12	131,876	278,903
2003	71,027	5,296	46,188	9,453	131,964	59,776	0	54,174	21	113,971	245,935
2004	87,961	9,238	59,899	10,803	167,901	43,483	0	67,592	194	111,269	279,170
2005	71,401	6,851	60,281	4,429	142,962	41,432	0	67,895	25	109,352	252,314
2006	78,426	9,781	56,995	4,307	149,509	33,802	0	83,837	40	117,679	267,188
2007	76,661	7,296	58,411	4,575	146,943	29,847	0	63,451	44	93,342	240,285
2008	77,151	9,204	65,804	4,290	156,449	26,136	0	75,028	28	101,192	257,641
2009	76,107	7,916	63,791	5,100	152,914	31,282	0	76,800	15	108,097	261,011
2010	64,349	7,027	57,815	4,106	133,297	35,227	0	57,753	1,804	94,784	228,081
2011	69,820	5,655	74,605	5,272	155,352	32,630	0	56,512	0	89,142	244,494
2012	75,150	3,932	64,050	12,437	155,569	36,166	0	66,020	8	102,194	257,763
2013	55,574	5,005	69,630	11,810	142,019	36,204	0	52,524	17	88,745	230,764
2014	69,264	4,712	68,469	14,808	157,253	37,387	0	54,495	17	91,899	249,152
2015	66,588	5,686	49,519	14,588	136,381	41,626	0	62,913	21	104,560	240,941
2016	57,728	3,931	62,411	21,205	145,275	35,535	0	56,731	22	92,288	237,563
2017	51,624	2,214	57,807	10,528	122,173	35,360	0	66,968	42	102,370	224,543
2018	62,542	4,141	64,478	11,192	142,353	28,668	0	65,304	18	93,990	236,343
2019	63,949	1,398	50,964	14,778	131,089	28,668	0	60,261	18	88,947	220,036

Table 9. Catches of skipjack in the Pacific Ocean

YEAR	WESTERN AND CENTRAL PACIFIC OCEAN					EASTERN PACIFIC OCEAN					TOTAL
	LONGLINE	POLE-AND-LINE	PURSE SEINE	OTHER	SUBTOTAL	LONGLINE	POLE-AND-LINE	PURSE SEINE	OTHER	SUBTOTAL	
1960	0	70,428	3,728	15,782	89,938	0	28,929	16,649	481	46,059	135,997
1961	0	127,011	11,693	18,032	156,736	0	28,995	45,706	428	75,129	231,865
1962	4	152,387	11,674	17,559	181,624	0	17,660	58,939	503	77,102	258,726
1963	0	94,757	9,592	18,354	122,703	0	17,138	82,404	2,389	101,931	224,634
1964	5	137,106	25,006	20,801	182,918	0	10,306	51,759	3,609	65,674	248,592
1965	11	129,933	4,657	20,620	155,221	0	19,867	64,056	1,046	84,969	240,190
1966	50	215,600	10,949	22,913	249,512	0	14,083	50,264	1,960	66,307	315,819
1967	101	168,846	10,937	24,930	204,814	0	18,016	104,928	5,038	127,982	332,796
1968	60	162,379	7,636	24,929	195,004	0	7,340	59,642	10,128	77,110	272,114
1969	124	168,084	5,043	30,070	203,321	0	6,970	46,020	11,904	64,894	268,215
1970	1,260	197,873	10,616	32,164	241,913	0	7,470	47,466	7,234	62,170	304,083
1971	1,440	180,945	17,048	29,164	228,597	0	11,679	94,502	6,702	112,883	341,480
1972	1,524	172,827	21,702	41,783	237,836	0	6,556	29,804	1,144	37,504	275,340
1973	1,838	253,217	23,338	50,407	328,800	0	9,135	39,247	638	49,020	377,820
1974	2,088	289,202	15,644	49,528	356,462	0	7,629	79,418	510	87,557	444,019
1975	1,893	218,271	18,445	50,189	288,798	0	13,848	120,358	526	134,732	423,530
1976	2,056	276,582	27,735	51,216	357,589	0	11,256	124,957	705	136,918	494,507
1977	3,107	294,641	38,836	66,475	403,059	0	7,522	84,603	1,960	94,085	497,144
1978	3,219	331,401	41,805	73,644	450,069	0	6,047	172,294	1,324	179,665	629,734
1979	2,175	285,859	64,070	60,440	412,544	0	6,346	133,695	1,462	141,503	554,047
1980	630	333,597	82,631	34,945	451,803	0	5,225	130,912	1,965	138,102	589,905
1981	754	296,065	96,943	39,558	433,320	0	5,906	119,165	930	126,001	559,321
1982	970	264,726	160,986	44,021	470,703	0	3,760	100,499	410	104,669	575,372
1983	2,143	298,928	292,275	45,450	638,796	0	4,387	56,851	737	61,975	700,771
1984	867	366,811	309,390	39,870	716,938	0	2,884	59,859	868	63,611	780,549
1985	1,100	238,932	281,649	39,603	561,284	0	946	50,829	227	52,002	613,286
1986	1,434	322,665	342,612	46,622	713,333	0	1,921	65,634	190	67,745	781,078
1987	2,320	252,142	352,593	46,829	653,884	0	2,233	64,019	214	66,466	720,350
1988	1,930	295,325	460,031	49,571	806,857	0	4,325	87,113	689	92,127	898,984
1989	2,502	275,088	442,700	48,272	768,562	0	2,940	94,934	1,047	98,921	867,483
1990	358	211,573	549,054	75,714	836,699	0	823	74,369	1,915	77,107	913,806
1991	882	259,778	710,193	77,113	1,047,966	0	1,717	62,228	1,945	65,890	1,113,856
1992	431	218,765	655,266	72,336	946,798	0	1,957	84,283	1,054	87,294	1,034,092
1993	569	255,152	574,756	58,831	889,308	0	3,772	83,830	2,317	89,919	979,227
1994	353	209,636	682,008	68,918	960,915	0	3,240	70,126	804	74,170	1,035,085
1995	572	247,744	669,936	80,441	998,693	0	5,253	127,047	1,988	134,288	1,132,981
1996	3,874	242,486	688,674	95,543	1,030,577	0	2,555	103,973	1,313	107,841	1,138,418
1997	3,932	236,999	621,807	86,675	949,413	0	3,260	153,456	231	156,947	1,106,360
1998	4,904	266,772	898,433	100,901	1,271,010	0	1,684	140,631	531	142,846	1,413,856
1999	4,064	255,330	739,351	95,226	1,093,971	0	2,044	261,565	1,594	265,203	1,359,174
2000	4,516	264,407	835,104	120,559	1,224,586	68	231	204,307	67	204,673	1,429,259
2001	5,036	212,668	808,443	101,449	1,127,596	1,214	448	143,561	34	145,257	1,272,853
2002	3,376	207,488	975,407	98,597	1,284,868	261	616	153,303	119	154,299	1,439,167
2003	3,693	238,179	916,646	100,959	1,259,477	634	638	274,529	2,777	278,578	1,538,055
2004	3,841	249,936	993,882	126,472	1,374,131	713	528	198,664	1,105	201,010	1,575,141
2005	1,045	216,715	1,086,326	117,105	1,421,191	231	1,300	263,229	1,780	266,540	1,687,731
2006	1,470	208,220	1,134,690	126,163	1,470,543	224	435	296,269	986	297,914	1,768,457
2007	1,132	212,720	1,273,957	146,739	1,634,548	107	276	208,296	1,065	209,744	1,844,292
2008	781	218,070	1,245,879	153,687	1,618,417	56	501	296,603	1,163	298,323	1,916,740
2009	1,149	200,692	1,421,558	141,140	1,764,539	184	151	230,527	1,112	231,974	1,996,513
2010	1,151	222,948	1,322,680	133,643	1,680,422	121	47	147,192	2,964	150,324	1,830,746
2011	1,085	206,542	1,190,964	127,786	1,526,377	1,384	24	276,035	851	278,294	1,804,671
2012	1,899	170,234	1,404,831	160,250	1,737,214	2,381	303	266,215	1,040	269,939	2,007,153
2013	1,045	168,856	1,487,916	159,243	1,817,060	2,024	167	272,500	774	275,465	2,092,525
2014	1,405	148,452	1,652,355	175,560	1,977,772	230	167	261,977	774	263,148	2,240,920
2015	1,790	151,156	1,418,599	203,811	1,775,356	189	1	328,907	1,256	330,353	2,105,709
2016	5,569	156,503	1,405,519	220,258	1,787,849	214	0	337,562	717	338,493	2,126,342
2017	2,548	122,855	1,305,865	186,255	1,617,523	170	0	324,811	879	325,860	1,943,383
2018	4,091	183,183	1,482,477	175,385	1,845,136	1,176	1	287,476	414	289,067	2,134,203
2019	5,615	126,209	1,664,496	237,988	2,034,308	1,176	1	353,535	414	355,126	2,389,434

Table 10. Catches of yellowfin in the Pacific Ocean

YEAR	WESTERN AND CENTRAL PACIFIC OCEAN					EASTERN PACIFIC OCEAN					TOTAL
	LONGLINE	POLE-AND-LINE	PURSE SEINE	OTHER	SUBTOTAL	LONGLINE	POLE-AND-LINE	PURSE SEINE	OTHER	SUBTOTAL	
1960	55,020	1,872	1,438	15,337	73,667	5,934	22,151	79,425	458	107,968	181,635
1961	53,166	3,259	2,777	16,236	75,438	12,500	15,220	80,058	949	108,727	184,165
1962	55,547	4,225	6,975	17,197	83,944	10,211	11,052	56,271	706	78,240	162,184
1963	53,185	2,071	2,277	18,223	75,756	18,973	7,041	48,004	688	74,706	150,462
1964	45,241	5,074	3,647	20,186	74,148	16,975	3,989	78,318	738	100,020	174,168
1965	45,487	3,434	3,752	20,956	73,629	15,620	6,983	65,348	312	88,263	161,892
1966	61,623	2,192	5,844	23,409	93,068	9,097	5,302	68,982	507	83,888	176,956
1967	35,720	3,125	3,421	26,303	68,569	9,285	4,512	65,442	1,534	80,773	149,342
1968	45,572	2,706	7,047	26,085	81,410	14,986	4,307	86,542	3,241	109,076	190,486
1969	51,372	5,166	3,869	26,612	87,019	15,329	7,195	113,665	1,866	138,055	225,074
1970	55,481	4,606	9,273	29,422	98,782	12,643	4,260	139,385	4,850	161,138	259,920
1971	56,927	5,248	10,836	31,204	104,215	8,013	5,300	104,863	2,482	120,658	224,873
1972	60,251	7,465	11,735	35,749	115,200	16,859	6,060	164,297	1,060	188,276	303,476
1973	61,818	7,458	16,974	41,726	127,976	11,697	3,933	194,200	661	210,491	338,467
1974	57,490	6,582	19,603	46,997	130,672	7,190	8,188	191,626	1,230	208,234	338,906
1975	68,416	7,801	15,169	48,536	139,922	10,640	5,629	183,028	567	199,864	339,786
1976	76,363	17,186	17,277	40,666	151,492	15,632	3,280	215,108	358	234,378	385,870
1977	92,680	15,257	19,703	55,092	182,732	12,355	1,841	184,922	248	199,366	382,098
1978	108,428	12,767	15,421	38,491	175,107	10,188	3,888	158,801	1,103	173,980	349,087
1979	104,932	11,638	32,574	46,375	195,519	11,473	4,789	170,650	212	187,124	382,643
1980	122,611	15,142	38,235	39,583	215,571	13,477	1,481	143,042	862	158,862	374,433
1981	95,574	22,044	59,753	44,533	221,904	7,999	1,477	168,234	800	178,510	400,414
1982	85,175	17,123	83,840	41,603	227,741	10,961	1,538	114,755	280	127,534	355,275
1983	87,734	17,184	133,389	45,179	283,486	10,895	4,007	83,929	849	99,680	383,166
1984	74,210	17,633	137,825	50,440	280,108	10,345	2,991	135,785	344	149,465	429,573
1985	77,674	22,717	128,990	57,803	287,184	13,198	1,070	211,459	212	225,939	513,123
1986	66,594	17,970	127,889	60,968	273,421	22,808	2,537	260,512	214	286,071	559,492
1987	72,687	19,044	172,680	57,367	321,778	18,911	5,107	262,008	138	286,164	607,942
1988	84,257	20,566	134,374	68,021	307,218	14,660	3,723	277,293	752	296,428	603,646
1989	69,921	22,133	204,896	71,530	368,480	17,032	4,145	277,996	263	299,436	667,916
1990	74,876	20,769	231,238	83,156	410,039	34,633	2,676	263,253	960	301,522	711,561
1991	58,566	19,182	271,997	92,536	442,281	30,899	2,856	231,257	958	265,970	708,251
1992	74,429	23,043	285,228	59,777	442,477	18,646	3,789	228,121	1,958	252,514	694,991
1993	69,375	20,486	249,692	59,188	398,741	24,009	4,951	219,492	3,034	251,486	650,227
1994	76,879	21,378	259,600	75,514	433,371	30,026	3,625	208,408	1,487	243,546	676,917
1995	85,210	23,209	239,386	82,395	430,200	20,596	1,268	215,434	2,066	239,364	669,564
1996	88,254	30,551	188,878	99,923	407,606	16,608	3,762	238,607	1,639	260,616	668,222
1997	78,069	22,845	292,509	83,763	477,186	22,163	4,418	244,878	600	272,059	749,245
1998	76,130	27,506	316,836	101,754	522,226	15,336	5,085	253,959	1,529	275,909	798,135
1999	68,539	26,787	273,249	103,038	471,613	11,682	1,783	281,920	2,706	298,091	769,704
2000	90,916	26,957	264,830	109,860	492,563	23,855	2,431	255,231	1,109	282,626	775,189
2001	89,797	24,443	277,595	99,047	490,882	29,608	3,916	382,702	520	416,746	907,628
2002	91,098	24,133	250,548	102,132	467,911	25,531	950	412,507	549	439,537	907,448
2003	91,031	24,304	309,643	105,505	530,483	25,174	470	381,107	1,145	407,896	938,379
2004	101,139	30,640	313,809	119,759	565,347	18,779	1,884	269,597	627	290,887	856,234
2005	83,044	27,007	350,447	63,353	523,851	12,118	1,821	268,102	1,852	283,893	807,744
2006	80,433	23,544	338,179	65,720	507,876	9,316	686	166,629	1,458	178,089	685,965
2007	79,594	26,460	338,865	72,275	517,194	7,779	894	170,016	1,439	180,128	697,322
2008	82,657	22,639	424,302	70,573	600,171	8,371	812	185,057	941	195,181	795,352
2009	96,889	23,859	337,690	96,720	555,158	8,479	709	236,771	995	246,954	802,112
2010	96,407	20,077	356,458	94,540	567,482	6,645	460	251,008	2,641	260,754	828,236
2011	95,599	36,772	314,922	81,251	528,544	8,071	276	206,851	806	216,004	744,548
2012	84,961	34,638	403,464	101,220	624,283	12,953	400	198,017	1,236	212,606	836,889
2013	74,989	21,834	367,103	103,994	567,920	11,414	754	220,038	865	233,071	800,991
2014	97,812	23,982	384,513	109,836	616,143	6,903	754	241,158	865	249,680	865,823
2015	100,839	35,580	324,396	130,869	591,684	10,649	15	245,727	3,583	259,974	851,658
2016	86,513	23,234	416,735	133,758	660,240	9,799	5	242,118	2,876	254,798	915,038
2017	83,350	24,787	509,150	93,757	711,044	10,476	4	210,932	2,689	224,101	935,145
2018	94,587	26,042	388,275	191,991	700,895	12,329	5	237,308	1,417	251,059	951,954
2019	98,037	37,440	370,247	156,386	662,110	12,329	5	223,132	1,417	236,883	898,993

Table 11. Catches of albacore, bigeye, skipjack and yellowfin in the WCPO

YEAR	ALBACORE		BIGEYE		SKIPJACK		YELLOWFIN		TOTAL
	TONNES	%	TONNES	%	TONNES	%	TONNES	%	
1960	31,463	13	45,025	19	89,938	37	73,667	31	240,093
1961	32,922	11	39,380	13	156,736	51	75,438	25	304,476
1962	37,602	11	36,868	11	181,624	53	83,944	25	340,038
1963	26,815	10	44,346	16	122,703	46	75,756	28	269,620
1964	26,652	8	32,380	10	182,918	58	74,148	23	316,098
1965	28,724	10	31,329	11	155,221	54	73,629	25	288,903
1966	52,180	12	33,152	8	249,512	58	93,068	22	427,912
1967	55,403	15	35,908	10	204,814	56	68,569	19	364,694
1968	61,379	17	29,868	8	195,004	53	81,410	22	367,661
1969	71,137	18	35,833	9	203,321	51	87,019	22	397,310
1970	71,496	16	41,072	9	241,913	53	98,782	22	453,263
1971	96,125	20	42,583	9	228,597	48	104,215	22	471,520
1972	106,697	21	55,445	11	237,836	46	115,200	22	515,178
1973	129,538	20	46,726	7	328,800	52	127,976	20	633,040
1974	112,827	17	48,891	8	356,462	55	130,672	20	648,852
1975	83,864	15	65,404	11	288,798	50	139,922	24	577,988
1976	131,620	18	77,931	11	357,589	50	151,492	21	718,632
1977	79,436	11	77,554	10	403,059	54	182,732	25	742,781
1978	105,771	13	60,364	8	450,069	57	175,107	22	791,311
1979	84,878	11	67,050	9	412,544	54	195,519	26	759,991
1980	94,123	11	66,997	8	451,803	55	215,571	26	828,494
1981	86,385	11	60,089	7	433,320	54	221,904	28	801,698
1982	86,847	10	70,467	8	470,703	55	227,741	27	855,758
1983	64,112	6	75,612	7	638,796	60	283,486	27	1,062,006
1984	73,452	6	81,177	7	716,938	62	280,108	24	1,151,675
1985	76,034	8	81,420	8	561,284	56	287,184	29	1,005,922
1986	71,045	6	84,003	7	713,333	62	273,421	24	1,141,802
1987	60,625	5	102,302	9	653,884	57	321,778	28	1,138,589
1988	62,279	5	89,418	7	806,857	64	307,218	24	1,265,772
1989	69,949	5	97,258	7	768,562	59	368,480	28	1,304,249
1990	60,990	4	117,128	8	836,699	59	410,039	29	1,424,856
1991	56,449	3	103,115	6	1,047,966	64	442,281	27	1,649,811
1992	62,483	4	126,581	8	946,798	60	442,477	28	1,578,339
1993	71,723	5	107,932	7	889,308	61	398,741	27	1,467,704
1994	91,696	6	119,069	7	960,915	60	433,371	27	1,605,051
1995	89,851	6	101,775	6	998,693	62	430,200	27	1,620,519
1996	88,874	5	97,880	6	1,030,577	63	407,606	25	1,624,937
1997	109,798	7	131,196	8	949,413	57	477,186	29	1,667,593
1998	107,373	5	143,311	7	1,271,010	62	522,226	26	2,043,920
1999	127,428	7	145,663	8	1,093,971	59	471,613	26	1,838,675
2000	96,302	5	137,144	7	1,224,586	63	492,563	25	1,950,595
2001	114,463	6	127,291	7	1,127,596	61	490,882	26	1,860,232
2002	140,122	7	147,027	7	1,284,868	63	467,911	23	2,039,928
2003	110,643	5	131,964	6	1,259,477	62	530,483	26	2,032,567
2004	114,461	5	167,901	8	1,374,131	62	565,347	25	2,221,840
2005	99,759	5	142,962	7	1,421,191	65	523,851	24	2,187,763
2006	98,291	4	149,509	7	1,470,543	66	507,876	23	2,226,219
2007	121,628	5	146,943	6	1,634,548	68	517,194	21	2,420,313
2008	99,250	4	156,449	6	1,618,417	65	600,171	24	2,474,287
2009	129,154	5	152,914	6	1,764,539	68	555,158	21	2,601,765
2010	117,522	5	133,297	5	1,680,422	67	567,482	23	2,498,723
2011	109,608	5	155,352	7	1,526,377	66	528,544	23	2,319,881
2012	137,126	5	155,569	6	1,737,214	65	624,283	24	2,654,192
2013	127,619	5	142,019	5	1,817,060	68	567,920	21	2,654,618
2014	113,899	4	157,253	5	1,977,772	69	616,143	22	2,865,067
2015	107,876	4	136,381	5	1,775,356	68	591,684	23	2,611,297
2016	87,738	3	145,275	5	1,787,849	67	660,240	25	2,681,102
2017	115,568	5	122,173	5	1,617,523	63	711,044	28	2,566,308
2018	105,303	4	142,353	5	1,845,136	66	700,895	25	2,793,687
2019	113,365	4	131,089	4	2,034,308	69	662,110	23	2,940,872

Table 12. Catches of albacore, bigeye, skipjack and yellowfin in the EPO

YEAR	ALBACORE		BIGEYE		SKIPJACK		YELLOWFIN		TOTAL
	TONNES	%	TONNES	%	TONNES	%	TONNES	%	
1960	23,292	12	17,746	9	46,059	24	107,968	55	195,065
1961	15,862	6	52,642	21	75,129	30	108,727	43	252,360
1962	22,659	10	45,670	20	77,102	34	78,240	35	223,671
1963	29,799	11	66,757	24	101,931	37	74,706	27	273,193
1964	22,586	10	46,406	20	65,674	28	100,020	43	234,686
1965	17,939	8	29,395	13	84,969	39	88,263	40	220,566
1966	17,938	9	35,302	17	66,307	33	83,888	41	203,435
1967	22,524	8	38,880	14	127,982	47	80,773	30	270,159
1968	26,249	10	39,966	16	77,110	31	109,076	43	252,401
1969	22,646	8	53,164	19	64,894	23	138,055	50	278,759
1970	26,809	9	35,752	13	62,170	22	161,138	56	285,869
1971	24,517	8	34,256	12	112,883	39	120,658	41	292,314
1972	29,548	10	40,225	14	37,504	13	188,276	64	295,553
1973	18,763	6	54,355	16	49,020	15	210,491	63	332,629
1974	25,257	7	38,515	11	87,557	24	208,234	58	359,563
1975	23,051	6	48,343	12	134,732	33	199,864	49	405,990
1976	20,577	4	71,584	15	136,918	30	234,378	51	463,457
1977	24,024	6	85,249	21	94,085	23	199,366	50	402,724
1978	31,108	7	89,198	19	179,665	38	173,980	37	473,951
1979	10,953	3	67,533	17	141,503	35	187,124	46	407,113
1980	11,569	3	86,403	22	138,102	35	158,862	40	394,936
1981	20,283	5	68,344	17	126,001	32	178,510	45	393,138
1982	12,522	4	60,349	20	104,669	34	127,534	42	305,074
1983	15,729	6	64,694	27	61,975	26	99,680	41	242,078
1984	21,857	8	55,268	19	63,611	22	149,465	52	290,201
1985	14,841	4	72,398	20	52,002	14	225,939	62	365,180
1986	11,284	2	105,185	22	67,745	14	286,071	61	470,285
1987	12,977	3	101,347	22	66,466	14	286,164	61	466,954
1988	15,771	3	74,313	16	92,127	19	296,428	62	478,639
1989	9,501	2	72,994	15	98,921	21	299,436	62	480,852
1990	10,850	2	104,851	21	77,107	16	301,522	61	494,330
1991	11,481	3	109,121	24	65,890	15	265,970	59	452,462
1992	23,075	5	92,000	20	87,294	19	252,514	56	454,883
1993	15,605	4	82,190	19	89,919	20	251,486	57	439,200
1994	20,618	5	107,065	24	74,170	17	243,546	55	445,399
1995	14,075	3	104,959	21	134,288	27	239,364	49	492,686
1996	16,112	3	109,017	22	107,841	22	260,616	53	493,586
1997	17,279	3	116,872	21	156,947	28	272,059	48	563,157
1998	25,913	5	91,132	17	142,846	27	275,909	51	535,800
1999	26,464	4	88,146	13	265,203	39	298,091	44	677,904
2000	23,275	4	142,498	22	204,673	31	282,626	43	653,072
2001	33,336	5	129,930	18	145,257	20	416,746	57	725,269
2002	30,154	4	131,876	17	154,299	20	439,537	58	755,866
2003	45,538	5	113,971	13	278,578	33	407,896	48	845,983
2004	40,834	6	111,269	17	201,010	31	290,887	45	644,000
2005	27,203	4	109,352	16	266,540	39	283,893	41	686,988
2006	32,992	5	117,679	19	297,914	48	178,089	28	626,674
2007	31,128	6	93,342	18	209,744	41	180,128	35	514,342
2008	26,627	4	101,192	16	298,323	48	195,181	31	621,323
2009	31,619	5	108,097	17	231,974	37	246,954	40	618,644
2010	34,048	6	94,784	18	150,324	28	260,754	48	539,910
2011	37,023	6	89,142	14	278,294	45	216,004	35	620,463
2012	42,309	7	102,194	16	269,939	43	212,606	34	627,048
2013	43,905	7	88,745	14	275,465	43	233,071	36	641,186
2014	51,281	8	91,899	14	263,148	40	249,680	38	656,008
2015	46,097	6	104,560	14	330,353	45	259,974	35	740,984
2016	41,362	6	92,288	13	338,493	47	254,798	35	726,941
2017	35,794	5	102,370	15	325,860	47	224,101	33	688,125
2018	35,427	5	93,990	14	289,067	43	251,059	37	669,543
2019	35,427	5	88,947	12	355,126	50	236,883	33	716,383

Table 13. Catches of albacore, bigeye, skipjack and yellowfin in the Pacific Ocean

YEAR	ALBACORE		BIGEYE		SKIPJACK		YELLOWFIN		TOTAL
	TONNES	%	TONNES	%	TONNES	%	TONNES	%	
1960	85,696	18	62,771	13	135,997	29	181,635	39	466,099
1961	76,350	13	92,022	16	231,865	40	184,165	32	584,402
1962	82,483	14	82,538	14	258,726	44	162,184	28	585,931
1963	100,017	17	111,103	19	224,634	38	150,462	26	586,216
1964	85,243	15	78,786	13	248,592	42	174,168	30	586,789
1965	98,748	18	60,724	11	240,190	43	161,892	29	561,554
1966	105,082	16	68,454	10	315,819	47	176,956	27	666,311
1967	127,358	19	74,788	11	332,796	49	149,342	22	684,284
1968	102,344	16	69,834	11	272,114	43	190,486	30	634,778
1969	100,397	15	88,997	13	268,215	39	225,074	33	682,683
1970	104,429	14	76,824	10	304,083	41	259,920	35	745,256
1971	131,609	17	76,839	10	341,480	44	224,873	29	774,801
1972	149,141	18	95,670	12	275,340	33	303,476	37	823,627
1973	154,294	16	101,081	10	377,820	39	338,467	35	971,662
1974	149,246	15	87,406	9	444,019	44	338,906	33	1,019,577
1975	113,550	11	113,747	11	423,530	43	339,786	34	990,613
1976	154,463	13	149,515	13	494,507	42	385,870	33	1,184,355
1977	101,840	9	162,803	14	497,144	43	382,098	33	1,143,885
1978	133,776	11	149,562	12	629,734	50	349,087	28	1,262,159
1979	98,186	8	134,583	12	554,047	47	382,643	33	1,169,459
1980	107,736	9	153,400	13	589,905	48	374,433	31	1,225,474
1981	106,022	9	128,433	11	559,321	47	400,414	34	1,194,190
1982	99,257	9	130,816	11	575,372	50	355,275	31	1,160,720
1983	80,131	6	140,306	11	700,771	54	383,166	29	1,304,374
1984	95,433	7	136,445	9	780,549	54	429,573	30	1,442,000
1985	90,607	7	153,818	11	613,286	45	513,123	37	1,370,834
1986	81,934	5	189,188	12	781,078	48	559,492	35	1,611,692
1987	74,024	5	203,649	13	720,350	45	607,942	38	1,605,965
1988	83,469	5	163,731	9	898,984	51	603,646	34	1,749,830
1989	93,742	5	170,252	9	867,483	48	667,916	37	1,799,393
1990	90,033	5	221,979	11	913,806	47	711,561	37	1,937,379
1991	73,193	3	212,236	10	1,113,856	53	708,251	34	2,107,536
1992	93,759	5	218,581	11	1,034,092	51	694,991	34	2,041,423
1993	89,996	5	190,122	10	979,227	51	650,227	34	1,909,572
1994	116,076	6	226,134	11	1,035,085	50	676,917	33	2,054,212
1995	104,893	5	206,734	10	1,132,981	54	669,564	32	2,114,172
1996	116,864	5	206,897	10	1,138,418	53	668,222	31	2,130,401
1997	141,098	6	248,068	11	1,106,360	49	749,245	33	2,244,771
1998	144,702	6	234,443	9	1,413,856	55	798,135	31	2,591,136
1999	161,119	6	233,809	9	1,359,174	54	769,704	30	2,523,806
2000	129,909	5	279,642	11	1,429,259	55	775,189	30	2,613,999
2001	149,429	6	257,221	10	1,272,853	49	907,628	35	2,587,131
2002	179,468	6	278,903	10	1,439,167	51	907,448	32	2,804,986
2003	157,075	5	245,935	9	1,538,055	53	938,379	33	2,879,444
2004	155,147	5	279,170	10	1,575,141	55	856,234	30	2,865,692
2005	129,879	5	252,314	9	1,687,731	59	807,744	28	2,877,668
2006	132,010	5	267,188	9	1,768,457	62	685,965	24	2,853,620
2007	152,948	5	240,285	8	1,844,292	63	697,322	24	2,934,847
2008	130,503	4	257,641	8	1,916,740	62	795,352	26	3,100,236
2009	166,529	5	261,011	8	1,996,513	62	802,112	25	3,226,165
2010	155,343	5	228,081	7	1,830,746	60	828,236	27	3,042,406
2011	145,665	5	244,494	8	1,804,671	61	744,548	25	2,939,378
2012	179,360	5	257,763	8	2,007,153	61	836,889	26	3,281,165
2013	169,885	5	230,764	7	2,092,525	64	800,991	24	3,294,165
2014	161,899	5	249,152	7	2,240,920	64	865,823	25	3,517,794
2015	153,306	5	240,941	7	2,105,709	63	851,658	25	3,351,614
2016	125,681	4	237,563	7	2,126,342	62	915,038	27	3,404,624
2017	151,120	5	224,543	7	1,943,383	60	935,145	29	3,254,191
2018	136,661	4	236,343	7	2,134,203	62	951,954	28	3,459,161
2019	148,350	4	220,036	6	2,389,434	65	898,993	25	3,656,813

Table 14. Global catches of albacore, bigeye, skipjack and yellowfin

YEAR	ALBACORE		BIGEYE		SKIPJACK		YELLOWFIN		TOTAL
	TONNES	%	TONNES	%	TONNES	%	TONNES	%	
1960	161,170	23	88,048	13	155,782	22	293,249	42	698,249
1961	146,476	18	124,098	15	253,353	31	284,369	35	808,296
1962	179,233	21	124,222	14	286,687	33	274,099	32	864,241
1963	191,898	22	150,516	18	263,950	31	248,781	29	855,145
1964	195,233	22	120,296	14	287,607	33	277,314	31	880,450
1965	202,762	23	119,244	14	290,750	33	265,353	30	878,109
1966	195,680	20	117,633	12	370,217	38	291,029	30	974,559
1967	224,775	23	124,652	13	391,383	39	254,047	26	994,857
1968	192,074	18	130,908	13	354,663	34	362,088	35	1,039,733
1969	196,593	18	154,978	14	334,042	31	383,850	36	1,069,463
1970	187,859	17	144,612	13	397,233	36	374,754	34	1,104,458
1971	226,249	19	153,544	13	461,600	39	340,049	29	1,181,442
1972	243,830	20	161,244	13	389,068	32	440,113	36	1,234,255
1973	251,464	18	173,980	12	505,609	36	472,751	34	1,403,804
1974	248,536	16	178,142	12	615,384	40	486,681	32	1,528,743
1975	184,505	13	211,192	15	519,035	37	505,723	36	1,420,455
1976	246,569	15	222,698	14	614,653	38	554,090	34	1,638,010
1977	189,795	11	252,270	15	648,860	39	578,567	35	1,669,492
1978	225,156	13	251,707	14	779,993	43	541,052	30	1,797,908
1979	190,607	11	214,066	13	692,332	42	562,115	34	1,659,120
1980	183,311	11	251,503	14	756,390	43	552,348	32	1,743,552
1981	180,556	10	230,877	13	746,600	42	605,162	34	1,763,195
1982	197,287	11	247,566	14	789,616	44	579,680	32	1,814,149
1983	167,177	9	249,429	13	909,029	47	615,499	32	1,941,134
1984	172,232	8	251,059	12	1,021,693	49	651,831	31	2,096,815
1985	177,269	8	284,255	13	873,903	41	795,072	37	2,130,499
1986	203,418	8	311,804	13	1,054,499	44	852,798	35	2,422,519
1987	187,724	8	324,502	13	1,008,930	41	916,193	38	2,437,349
1988	180,061	7	303,728	11	1,244,881	46	955,361	36	2,684,031
1989	177,744	6	317,734	11	1,234,060	45	1,036,125	37	2,765,663
1990	192,164	6	380,339	13	1,288,101	43	1,146,825	38	3,007,429
1991	158,620	5	385,512	12	1,579,971	49	1,109,445	34	3,233,548
1992	185,228	6	389,724	12	1,490,647	46	1,175,490	36	3,241,089
1993	182,019	6	403,625	12	1,497,397	46	1,205,151	37	3,288,192
1994	212,344	6	468,867	14	1,562,095	46	1,175,738	34	3,419,044
1995	195,515	6	452,379	13	1,633,706	48	1,156,604	34	3,438,204
1996	207,405	6	456,359	13	1,608,694	47	1,165,129	34	3,437,587
1997	228,237	6	505,460	14	1,591,893	45	1,227,638	35	3,553,228
1998	241,620	6	486,801	13	1,906,139	49	1,257,489	32	3,892,049
1999	265,838	7	513,249	13	1,951,873	49	1,266,184	32	3,997,144
2000	238,803	6	512,863	13	2,005,925	50	1,244,031	31	4,001,622
2001	263,070	7	471,835	12	1,860,873	47	1,389,324	35	3,985,102
2002	274,238	7	496,730	12	2,043,784	49	1,388,535	33	4,203,287
2003	244,877	6	467,259	11	2,162,994	49	1,506,427	34	4,381,557
2004	239,713	5	504,757	11	2,197,297	50	1,491,847	34	4,433,614
2005	219,080	5	447,419	10	2,389,741	54	1,407,785	32	4,464,025
2006	229,199	5	453,810	10	2,521,163	57	1,200,223	27	4,404,395
2007	244,665	6	436,238	10	2,453,488	58	1,104,301	26	4,238,692
2008	208,598	5	446,222	10	2,503,892	57	1,225,718	28	4,384,430
2009	246,255	5	462,416	10	2,610,216	58	1,189,442	26	4,508,329
2010	240,139	6	389,373	9	2,444,094	57	1,248,187	29	4,321,793
2011	228,094	5	415,234	10	2,406,532	57	1,183,622	28	4,233,482
2012	265,723	6	453,581	10	2,601,241	56	1,342,576	29	4,663,121
2013	248,140	5	411,775	9	2,785,239	59	1,301,191	27	4,746,345
2014	243,000	5	417,216	8	2,896,175	59	1,379,231	28	4,935,622
2015	233,181	5	416,798	9	2,752,790	58	1,370,955	29	4,773,724
2016	210,381	4	403,494	8	2,857,964	58	1,473,041	30	4,944,880
2017	235,052	5	393,983	8	2,719,369	56	1,472,001	31	4,820,405
2018	227,177	4	403,927	8	3,048,386	59	1,526,226	29	5,205,716
2019	238,866	4	387,620	7	3,303,617	61	1,473,265	27	5,403,368

Table 15. Catches of albacore, bigeye, skipjack and yellowfin by ocean area. Estimates for the Indian Ocean for 2019 have been carried over from 2017, respectively.

YEAR	WCPO		EPO		ATLANTIC		INDIAN		TOTAL
	TONNES	%	TONNES	%	TONNES	%	TONNES	%	
1960	240,093	34	226,006	32	145,384	21	86,766	12	698,249
1961	304,476	38	279,926	35	135,230	17	88,664	11	808,296
1962	340,038	39	245,893	28	169,697	20	108,613	13	864,241
1963	269,620	32	316,596	37	188,394	22	80,535	9	855,145
1964	316,098	36	270,691	31	201,987	23	91,674	10	880,450
1965	288,903	33	272,651	31	222,199	25	94,356	11	878,109
1966	427,912	44	238,399	24	181,817	19	126,431	13	974,559
1967	364,694	37	319,590	32	184,929	19	125,644	13	994,857
1968	367,661	35	267,117	26	228,017	22	176,938	17	1,039,733
1969	397,310	37	285,373	27	236,694	22	150,086	14	1,069,463
1970	453,263	41	291,993	26	237,191	21	122,011	11	1,104,458
1971	471,520	40	303,281	26	290,958	25	115,683	10	1,181,442
1972	515,178	42	308,449	25	301,937	24	108,691	9	1,234,255
1973	633,040	45	338,622	24	304,880	22	127,262	9	1,403,804
1974	648,852	42	370,725	24	358,304	23	150,862	10	1,528,743
1975	577,988	41	412,625	29	302,119	21	127,723	9	1,420,455
1976	718,632	44	465,723	28	316,778	19	136,877	8	1,638,010
1977	742,781	44	401,104	24	372,569	22	153,038	9	1,669,492
1978	791,311	44	470,848	26	368,658	21	167,091	9	1,797,908
1979	759,991	46	409,468	25	338,014	20	151,647	9	1,659,120
1980	828,494	48	396,980	23	367,602	21	150,476	9	1,743,552
1981	801,698	45	392,492	22	416,733	24	152,272	9	1,763,195
1982	855,758	47	304,962	17	469,190	26	184,239	10	1,814,149
1983	1,062,006	55	242,368	12	430,504	22	206,256	11	1,941,134
1984	1,151,675	55	290,325	14	372,368	18	282,447	13	2,096,815
1985	1,005,922	47	364,912	17	429,982	20	329,683	15	2,130,499
1986	1,141,802	47	469,890	19	423,538	17	387,289	16	2,422,519
1987	1,138,589	47	467,376	19	403,643	17	427,741	18	2,437,349
1988	1,265,772	47	484,058	18	414,430	15	519,771	19	2,684,031
1989	1,304,249	47	495,144	18	424,384	15	541,886	20	2,765,663
1990	1,424,856	47	512,523	17	489,460	16	580,590	19	3,007,429
1991	1,649,811	51	457,725	14	539,051	17	586,961	18	3,233,548
1992	1,578,339	49	463,084	14	503,396	16	696,270	21	3,241,089
1993	1,467,704	45	441,868	13	554,088	17	824,532	25	3,288,192
1994	1,605,051	47	449,161	13	562,096	16	802,736	23	3,419,044
1995	1,620,519	47	493,653	14	514,855	15	809,177	24	3,438,204
1996	1,624,937	47	505,464	15	489,079	14	818,107	24	3,437,587
1997	1,667,593	47	577,178	16	452,083	13	856,374	24	3,553,228
1998	2,043,920	53	547,216	14	469,574	12	831,339	21	3,892,049
1999	1,838,675	46	685,131	17	502,204	13	971,134	24	3,997,144
2000	1,950,595	49	663,404	17	459,662	11	927,961	23	4,001,622
2001	1,860,232	47	726,899	18	484,624	12	913,347	23	3,985,102
2002	2,039,928	49	765,058	18	394,379	9	1,003,922	24	4,203,287
2003	2,032,567	46	846,877	19	424,528	10	1,077,585	25	4,381,557
2004	2,221,840	50	643,852	15	419,111	9	1,148,811	26	4,433,614
2005	2,187,763	49	689,905	15	399,550	9	1,186,807	27	4,464,025
2006	2,226,219	51	627,401	14	381,814	9	1,168,961	27	4,404,395
2007	2,420,313	57	514,534	12	370,258	9	933,587	22	4,238,692
2008	2,474,287	56	625,949	14	366,618	8	917,576	21	4,384,430
2009	2,601,765	58	624,400	14	421,152	9	861,012	19	4,508,329
2010	2,498,723	58	543,683	13	424,547	10	854,840	20	4,321,793
2011	2,319,881	55	619,497	15	456,295	11	837,809	20	4,233,482
2012	2,654,192	57	626,973	13	489,199	10	892,757	19	4,663,121
2013	2,654,618	56	639,547	13	476,802	10	975,378	21	4,746,345
2014	2,865,067	58	652,727	13	461,121	9	956,707	19	4,935,622
2015	2,611,297	55	740,317	16	494,029	10	928,081	19	4,773,724
2016	2,681,102	54	723,522	15	534,267	11	1,005,989	20	4,944,880
2017	2,566,308	53	687,883	14	527,962	11	1,038,252	22	4,820,405
2018	2,793,687	54	665,474	13	563,250	11	1,183,305	23	5,205,716
2019	2,940,872	54	715,941	13	563,250	10	1,183,305	22	5,403,368

Table 16. Estimated Discards (tonnes) by longliners in the WCPFC Statistical Area
(2018-2019 data are provisional)

YEAR	ALBACORE			BIGEYE			YELLOWFIN			TOTAL		
	Retained + Discarded	Discarded	%	Retained + Discarded	Discarded	%	Retained + Discarded	Discarded	%	Retained + Discarded	Discarded	%
1994	65,031	5,892	9.1%	81,487	2,379	2.9%	86,063	4,062	4.7%	232,581	12,333	5.3%
1995	63,335	3,091	4.9%	69,297	1,192	1.7%	92,598	4,500	4.9%	225,229	8,783	3.9%
1996	64,509	3,058	4.7%	59,064	1,028	1.7%	93,045	1,172	1.3%	216,618	5,258	2.4%
1997	80,358	8,534	10.6%	71,115	2,610	3.7%	84,048	3,093	3.7%	235,520	14,237	6.0%
1998	90,143	11,376	12.6%	87,957	3,008	3.4%	83,712	2,721	3.3%	261,812	17,105	6.5%
1999	69,763	942	1.4%	75,641	688	0.9%	72,117	1,111	1.5%	217,521	2,741	1.3%
2000	69,986	406	0.6%	77,358	449	0.6%	97,432	585	0.6%	244,776	1,439	0.6%
2001	88,780	3,924	4.4%	79,024	356	0.5%	96,113	577	0.6%	263,917	4,856	1.8%
2002	94,559	4,908	5.2%	93,647	1,283	1.4%	97,280	1,663	1.7%	285,486	7,854	2.8%
2003	79,235	444	0.6%	84,178	1,178	1.4%	97,540	1,863	1.9%	260,954	3,485	1.3%
2004	78,984	2,069	2.6%	101,041	1,354	1.3%	105,620	1,584	1.5%	285,644	5,008	1.8%
2005	84,872	1,842	2.2%	79,171	578	0.7%	88,108	696	0.8%	252,150	3,116	1.2%
2006	86,482	1,254	1.5%	84,345	793	0.9%	85,861	876	1.0%	256,688	2,923	1.1%
2007	81,501	1,353	1.7%	82,342	1,005	1.2%	83,250	824	1.0%	247,093	3,182	1.3%
2008	80,770	1,769	2.2%	84,415	1,064	1.3%	86,539	2,423	2.8%	251,724	5,256	2.1%
2009	100,982	1,888	1.9%	80,878	388	0.5%	100,072	721	0.7%	281,932	2,997	1.1%
2010	103,520	1,729	1.7%	73,303	586	0.8%	99,051	683	0.7%	275,874	2,999	1.1%
2011	86,413	1,141	1.3%	78,109	547	0.7%	98,089	647	0.7%	262,611	2,335	0.9%
2012	101,622	793	0.8%	84,500	532	0.6%	88,560	903	1.0%	274,682	2,228	0.8%
2013	98,822	860	0.9%	66,917	1,305	2.0%	78,810	1,639	2.1%	244,549	3,804	1.6%
2014	87,674	631	0.7%	76,540	1,225	1.6%	101,660	1,301	1.3%	265,874	3,157	1.2%
2015	94,179	499	0.5%	72,953	1,357	1.9%	105,527	1,805	1.7%	272,659	3,661	1.3%
2016	79,873	839	1.1%	63,843	1,373	2.2%	93,927	2,217	2.4%	237,642	4,428	1.9%
2017	98,711	957	1.0%	58,126	1,529	2.6%	86,227	2,561	3.0%	243,064	5,047	2.1%
2018	86,447	813	0.9%	68,610	2,079	3.0%	97,727	2,971	3.0%	252,784	5,862	2.3%
2019	95,280	1,067	1.1%	68,371	1,641	2.4%	104,440	2,214	2.1%	268,091	4,922	1.8%
Average	85,070	2,388	2.8%	77,009	1,213	1.6%	92,439	1,747	1.9%	254,518	5,347	2.1%

Table 17. Estimated Discards (tonnes) by purse seiners in tropical waters of the WCPFC Statistical Area, excluding the domestic fisheries of Indonesia and the Philippines

YEAR	SKIPJACK			YELLOWFIN			BIGEYE			TOTAL		
	Retained + Discarded	Discarded	%	Retained + Discarded	Discarded	%	Retained + Discarded	Discarded	%	Retained + Discarded	Discarded	%
1995	530,039	12,562	2.4%	215,968	2,268	1.1%	29,635	391	1.3%	775,643	15,221	2.0%
1996	551,545	18,642	3.4%	166,732	2,067	1.2%	30,843	814	2.6%	749,120	21,524	2.9%
1997	454,016	13,530	3.0%	253,214	1,950	0.8%	50,292	714	1.4%	757,522	16,194	2.1%
1998	677,074	21,599	3.2%	295,127	5,519	1.9%	50,295	704	1.4%	1,022,496	27,822	2.7%
1999	578,873	19,450	3.4%	243,478	4,918	2.0%	73,142	1,894	2.6%	895,492	26,263	2.9%
2000	678,113	32,956	4.9%	231,477	2,431	1.1%	55,353	1,760	3.2%	964,943	37,147	3.8%
2001	667,768	36,527	5.5%	247,908	2,008	0.8%	43,701	1,114	2.6%	959,377	39,649	4.1%
2002	827,913	41,644	5.0%	232,806	2,677	1.2%	50,864	738	1.5%	1,111,583	45,059	4.1%
2003	720,077	25,203	3.5%	273,651	4,762	1.7%	44,940	643	1.4%	1,038,668	30,607	2.9%
2004	792,157	35,093	4.4%	278,660	8,834	3.2%	58,713	1,838	3.1%	1,129,530	45,764	4.1%
2005	900,499	40,973	4.6%	305,525	6,722	2.2%	56,873	2,366	4.2%	1,262,898	50,060	4.0%
2006	928,889	21,364	2.3%	289,146	4,742	1.6%	52,918	804	1.5%	1,270,954	26,911	2.1%
2007	1,067,181	31,268	2.9%	291,972	3,445	1.2%	57,174	949	1.7%	1,416,327	35,663	2.5%
2008	1,010,929	20,117	2.0%	369,670	4,510	1.2%	61,884	1,485	2.4%	1,442,483	26,113	1.8%
2009	1,212,922	27,412	2.3%	301,254	4,880	1.6%	63,872	1,833	2.9%	1,578,048	34,125	2.2%
2010	1,129,583	14,911	1.3%	337,506	3,476	1.0%	54,169	764	1.4%	1,521,258	19,151	1.3%
2011	1,064,635	11,605	1.1%	298,957	2,392	0.8%	73,693	980	1.3%	1,437,285	14,976	1.0%
2012	1,250,252	19,379	1.6%	365,156	3,980	1.1%	63,508	895	1.4%	1,678,915	24,255	1.4%
2013	1,258,023	34,973	2.8%	327,503	5,928	1.8%	69,633	1,393	2.0%	1,655,158	42,293	2.6%
2014	1,450,371	62,511	4.3%	349,401	8,281	2.4%	68,371	1,983	2.9%	1,868,142	72,775	3.9%
2015	1,288,790	40,081	3.1%	298,015	6,884	2.3%	50,498	1,606	3.2%	1,637,303	48,571	3.0%
2016	1,238,071	38,752	3.1%	357,454	5,898	1.7%	62,473	1,843	3.0%	1,657,997	46,493	2.8%
2017	1,075,667	16,458	1.5%	388,481	4,429	1.1%	55,336	1,129	2.0%	1,519,484	22,015	1.4%
2018	1,338,745	14,325	1.1%	322,724	2,324	0.7%	62,701	621	1.0%	1,724,170	17,269	1.0%
2019	1,522,396	15,224	1.0%	318,195	2,036	0.6%	43,198	194	0.5%	1,883,790	17,455	0.9%
Average	968,581	26,662	2.8%	294,399	4,294	1.5%	55,363	1,178	2.1%	1,318,343	32,135	2.4%

Table 18. Commercial catches of billfish in the WCPFC Statistical Area, by gear type and species

YEAR	LONGLINE					PURSE SEINE			YEAR	OTHER COMMERCIAL GEARS					TOTAL
	BLUE MARLIN	BLACK MARLIN	STRIPED MARLIN	SWORD-FISH	SUB-TOTAL	BLUE MARLIN	BLACK MARLIN	SUB-TOTAL		BLUE MARLIN	BLACK MARLIN	STRIPED MARLIN	SWORD-FISH	SUB-TOTAL	
1962	14,197	2,091	15,207	10,354	41,849	0	0	0	1962	84	24	0	38	146	41,995
1963	11,583	2,100	12,384	9,741	35,808	0	0	0	1963	89	26	0	41	156	35,964
1964	10,240	1,697	17,023	5,942	34,902	0	0	0	1964	133	27	2,366	1,203	3,729	38,631
1965	8,303	2,260	13,298	8,176	32,037	0	0	0	1965	165	29	2,790	2,118	5,102	37,139
1966	8,763	2,408	9,648	9,821	30,640	0	0	0	1966	194	30	1,676	1,934	3,834	34,474
1967	7,287	2,362	11,506	10,643	31,798	0	0	0	1967	241	32	1,641	1,161	3,075	34,873
1968	6,673	2,951	11,783	9,504	30,911	0	1	1	1968	196	34	1,255	1,883	3,368	34,280
1969	7,091	2,619	8,500	8,945	27,155	0	1	1	1969	334	36	2,625	1,673	4,668	31,824
1970	9,977	3,544	7,594	7,578	28,693	6	14	20	1970	201	50	1,184	1,895	3,330	32,043
1971	6,450	3,776	6,373	8,615	25,214	8	19	27	1971	219	56	2,284	617	3,176	28,417
1972	7,957	3,696	5,194	8,110	24,957	9	20	29	1972	237	59	1,369	436	2,101	27,087
1973	7,483	3,793	5,550	7,303	24,129	14	31	45	1973	584	69	4,011	972	5,636	29,810
1974	7,253	3,115	4,788	7,990	23,146	7	17	24	1974	572	80	3,930	1,789	6,371	29,541
1975	7,079	3,281	3,764	8,519	22,643	7	17	24	1975	1,265	82	7,255	3,072	11,674	34,341
1976	6,710	2,242	3,497	9,955	22,404	6	16	22	1976	1,311	71	4,163	4,138	9,683	32,109
1977	7,020	2,427	2,948	9,583	21,978	9	21	30	1977	1,608	96	4,980	2,802	9,486	31,494
1978	8,861	2,787	3,744	9,871	25,263	8	20	28	1978	1,644	67	6,035	2,855	10,601	35,892
1979	9,414	2,395	5,059	11,178	28,046	13	29	42	1979	1,168	81	3,058	1,368	5,675	33,763
1980	10,245	1,552	4,823	8,740	25,360	13	29	42	1980	1,333	72	4,008	2,308	7,721	33,123
1981	10,332	2,009	4,773	10,111	27,225	30	60	90	1981	1,709	80	4,410	2,201	8,400	35,715
1982	10,398	2,023	4,536	9,214	26,171	42	90	132	1982	1,560	69	2,997	1,643	6,269	32,572
1983	9,005	1,741	3,476	10,108	24,330	67	132	199	1983	1,696	78	2,667	1,386	5,827	30,356
1984	12,197	1,317	4,836	9,975	28,325	86	161	247	1984	1,099	101	3,060	1,420	5,680	34,252
1985	9,667	1,048	5,509	12,415	28,639	69	137	206	1985	1,414	130	3,116	1,540	6,200	35,045
1986	10,348	1,121	6,175	11,473	29,117	66	128	194	1986	1,201	139	4,181	1,633	7,154	36,465
1987	14,403	1,533	5,558	12,930	34,424	73	145	218	1987	1,088	100	2,399	1,317	4,904	39,546
1988	14,553	2,294	7,613	12,804	37,264	71	142	213	1988	1,228	108	2,880	1,552	5,768	43,245
1989	11,893	1,207	6,646	10,695	30,441	86	169	255	1989	1,313	116	2,211	2,115	5,755	36,451
1990	10,200	1,120	4,871	11,470	27,661	95	184	279	1990	1,375	166	2,489	1,388	5,418	33,358
1991	10,842	1,449	5,237	12,713	30,241	135	253	388	1991	1,270	180	1,839	883	4,172	34,801
1992	13,302	1,650	5,363	18,322	38,637	141	241	382	1992	1,146	131	1,515	1,393	4,185	43,204
1993	15,854	1,428	10,600	19,637	47,519	142	246	388	1993	1,112	127	1,267	747	3,253	51,160
1994	15,609	1,844	6,189	17,057	40,699	141	239	380	1994	1,423	140	1,824	924	4,311	45,390
1995	18,044	1,335	7,189	15,714	42,282	144	242	386	1995	1,491	158	1,248	1,203	4,100	46,768
1996	14,526	945	5,834	15,177	36,482	160	263	423	1996	1,921	166	912	1,260	4,259	41,164
1997	12,544	964	5,010	18,175	36,693	179	270	449	1997	1,759	155	1,017	830	3,761	40,903
1998	16,449	1,545	7,080	19,299	44,373	182	267	449	1998	1,871	178	1,421	1,082	4,552	49,374
1999	14,573	1,927	5,882	20,539	42,921	153	235	388	1999	1,897	184	1,340	1,256	4,677	47,986
2000	13,797	1,296	4,264	21,214	40,571	184	273	457	2000	1,042	137	1,380	1,404	3,963	44,991
2001	15,583	1,498	4,779	18,286	40,146	189	257	446	2001	1,117	129	1,370	1,050	3,666	44,258
2002	15,527	1,795	4,375	18,889	40,586	205	278	483	2002	1,085	142	1,587	1,452	4,266	45,335
2003	24,193	2,031	5,364	20,236	51,824	214	283	497	2003	1,138	177	1,261	1,440	4,016	56,337
2004	21,847	2,293	4,955	22,065	51,160	226	293	519	2004	1,147	185	1,466	1,383	4,181	55,860
2005	20,126	2,734	4,277	19,776	46,913	848	628	1,476	2005	1,203	185	1,334	1,542	4,264	52,653
2006	17,850	2,430	4,028	22,690	46,998	611	399	1,010	2006	1,182	206	1,308	1,447	4,143	52,151
2007	15,035	1,773	3,406	24,835	45,049	824	268	1,092	2007	1,318	236	1,083	1,389	4,026	50,167
2008	15,011	1,771	3,639	22,523	42,944	592	442	1,034	2008	1,298	224	1,446	1,227	4,195	48,173
2009	14,916	1,972	2,827	19,759	39,474	579	344	923	2009	1,041	145	974	1,211	3,371	43,768
2010	15,904	2,104	2,855	17,351	38,214	644	661	1,305	2010	1,390	180	1,042	856	3,468	42,987
2011	14,913	1,739	3,688	18,007	38,347	752	429	1,181	2011	1,350	173	492	461	2,476	42,004
2012	14,539	1,563	3,758	19,551	39,411	918	367	1,285	2012	1,815	232	741	1,886	4,674	45,370
2013	15,835	1,682	3,442	18,015	38,974	946	529	1,475	2013	1,961	228	469	2,897	5,555	46,004
2014	16,913	2,050	3,696	18,045	40,704	869	424	1,293	2014	2,430	371	277	2,612	5,690	47,689
2015	16,111	2,282	4,000	18,888	41,281	1,218	350	1,568	2015	2,246	310	447	2,807	5,810	48,701
2016	14,920	1,233	2,761	17,602	36,516	935	382	1,317	2016	4,749	262	714	3,750	9,475	47,399
2017	12,622	927	2,965	17,932	34,446	561	379	940	2017	2,637	405	403	1,994	5,439	40,876
2018	11,753	948	2,520	17,080	32,301	721	404	1,125	2018	2,718	435	459	2,117	5,729	39,212
2019	12,583	949	3,136	14,673	31,341	592	384	976	2019	2,681	415	460	2,116	5,672	38,063

Table 19. Commercial catches of billfish in the WCPFC Statistical Area, by species

YEAR	BLUE MARLIN		BLACK MARLIN		STRIPED MARLIN		SWORDFISH		TOTAL
	TONNES	%	TONNES	%	TONNES	%	TONNES	%	
1962	14,281	34	2,115	5	15,207	36	10,392	25	41,995
1963	11,672	32	2,126	6	12,384	34	9,782	27	35,964
1964	10,373	27	1,724	4	19,389	50	7,145	18	38,631
1965	8,468	23	2,289	6	16,088	43	10,294	28	37,139
1966	8,957	26	2,438	7	11,324	33	11,755	34	34,474
1967	7,528	22	2,394	7	13,147	38	11,804	34	34,873
1968	6,869	20	2,986	9	13,038	38	11,387	33	34,280
1969	7,425	23	2,656	8	11,125	35	10,618	33	31,824
1970	10,184	32	3,608	11	8,778	27	9,473	30	32,043
1971	6,677	23	3,851	14	8,657	30	9,232	32	28,417
1972	8,203	30	3,775	14	6,563	24	8,546	32	27,087
1973	8,081	27	3,893	13	9,561	32	8,275	28	29,810
1974	7,832	27	3,212	11	8,718	30	9,779	33	29,541
1975	8,351	24	3,380	10	11,019	32	11,591	34	34,341
1976	8,027	25	2,329	7	7,660	24	14,093	44	32,109
1977	8,637	27	2,544	8	7,928	25	12,385	39	31,494
1978	10,513	29	2,874	8	9,779	27	12,726	35	35,892
1979	10,595	31	2,505	7	8,117	24	12,546	37	33,763
1980	11,591	35	1,653	5	8,831	27	11,048	33	33,123
1981	12,071	34	2,149	6	9,183	26	12,312	34	35,715
1982	12,000	37	2,182	7	7,533	23	10,857	33	32,572
1983	10,768	35	1,951	6	6,143	20	11,494	38	30,356
1984	13,382	39	1,579	5	7,896	23	11,395	33	34,252
1985	11,150	32	1,315	4	8,625	25	13,955	40	35,045
1986	11,615	32	1,388	4	10,356	28	13,106	36	36,465
1987	15,564	39	1,778	4	7,957	20	14,247	36	39,546
1988	15,852	37	2,544	6	10,493	24	14,356	33	43,245
1989	13,292	36	1,492	4	8,857	24	12,810	35	36,451
1990	11,670	35	1,470	4	7,360	22	12,858	39	33,358
1991	12,247	35	1,882	5	7,076	20	13,596	39	34,801
1992	14,589	34	2,022	5	6,878	16	19,715	46	43,204
1993	17,108	33	1,801	4	11,867	23	20,384	40	51,160
1994	17,173	38	2,223	5	8,013	18	17,981	40	45,390
1995	19,679	42	1,735	4	8,437	18	16,917	36	46,768
1996	16,607	40	1,374	3	6,746	16	16,437	40	41,164
1997	14,482	35	1,389	3	6,027	15	19,005	46	40,903
1998	18,502	37	1,990	4	8,501	17	20,381	41	49,374
1999	16,623	35	2,346	5	7,222	15	21,795	45	47,986
2000	15,023	33	1,706	4	5,644	13	22,618	50	44,991
2001	16,889	38	1,884	4	6,149	14	19,336	44	44,258
2002	16,817	37	2,215	5	5,962	13	20,341	45	45,335
2003	25,545	45	2,491	4	6,625	12	21,676	38	56,337
2004	23,220	42	2,771	5	6,421	11	23,448	42	55,860
2005	22,177	42	3,547	7	5,611	11	21,318	40	52,653
2006	19,643	38	3,035	6	5,336	10	24,137	46	52,151
2007	17,177	34	2,277	5	4,489	9	26,224	52	50,167
2008	16,901	35	2,437	5	5,085	11	23,750	49	48,173
2009	16,536	38	2,461	6	3,801	9	20,970	48	43,768
2010	17,938	42	2,945	7	3,897	9	18,207	42	42,987
2011	17,015	41	2,341	6	4,180	10	18,468	44	42,004
2012	17,272	38	2,162	5	4,499	10	21,437	47	45,370
2013	18,742	41	2,439	5	3,911	9	20,912	45	46,004
2014	20,212	42	2,845	6	3,975	8	20,657	43	47,689
2015	19,575	40	2,942	6	4,469	9	21,715	45	48,701
2016	20,604	43	1,877	4	3,526	7	21,392	45	47,399
2017	15,820	39	1,711	4	3,408	8	19,937	49	40,876
2018	15,192	39	1,787	5	3,022	8	19,211	49	39,212
2019	15,856	42	1,748	5	3,629	10	16,830	44	38,063

Table 20. Commercial catches of striped marlin and swordfish in the WCPFC Statistical Area north of the equator

YEAR	STRIPED MARLIN		SWORDFISH		TOTAL
	TONNES	%	TONNES	%	
1962	11,833	56	9,363	44	21,196
1963	8,990	51	8,686	49	17,676
1964	17,521	73	6,387	27	23,908
1965	13,839	60	9,046	40	22,885
1966	8,759	46	10,088	54	18,847
1967	11,417	53	10,274	47	21,691
1968	11,571	55	9,320	45	20,891
1969	9,536	52	8,851	48	18,387
1970	7,079	48	7,613	52	14,692
1971	6,123	49	6,298	51	12,421
1972	4,170	42	5,744	58	9,914
1973	6,928	54	5,909	46	12,837
1974	6,557	48	7,000	52	13,557
1975	9,056	49	9,507	51	18,563
1976	5,875	34	11,291	66	17,166
1977	6,497	37	11,101	63	17,598
1978	7,781	41	11,307	59	19,088
1979	6,173	37	10,350	63	16,523
1980	7,479	46	8,723	54	16,202
1981	6,709	42	9,391	58	16,100
1982	4,918	39	7,770	61	12,688
1983	4,393	32	9,350	68	13,743
1984	5,526	38	9,043	62	14,569
1985	6,799	37	11,424	63	18,223
1986	9,115	46	10,712	54	19,827
1987	6,246	37	10,575	63	16,821
1988	8,202	45	9,920	55	18,122
1989	6,326	42	8,872	58	15,198
1990	5,679	37	9,853	63	15,532
1991	5,515	34	10,813	66	16,328
1992	5,302	26	15,151	74	20,453
1993	10,143	37	17,032	63	27,175
1994	5,888	29	14,201	71	20,089
1995	6,467	33	13,303	67	19,770
1996	4,923	29	11,860	71	16,783
1997	4,062	25	12,266	75	16,328
1998	5,491	30	12,913	70	18,404
1999	4,827	26	13,537	74	18,364
2000	3,857	21	14,481	79	18,338
2001	4,139	27	11,247	73	15,386
2002	3,566	24	11,555	76	15,121
2003	3,874	26	11,136	74	15,010
2004	3,861	25	11,390	75	15,251
2005	3,247	23	10,694	77	13,941
2006	3,015	22	10,905	78	13,920
2007	2,529	18	11,833	82	14,362
2008	3,032	24	9,640	76	12,672
2009	1,905	17	9,051	83	10,956
2010	2,285	21	8,736	79	11,021
2011	2,420	20	9,466	80	11,886
2012	2,832	20	11,119	80	13,951
2013	2,530	19	10,937	81	13,467
2014	2,373	18	10,701	82	13,074
2015	2,884	18	13,133	82	16,017
2016	2,210	15	12,450	85	14,660
2017	2,412	16	12,903	84	15,315
2018	1,977	14	12,111	86	14,088
2019	2,523	19	10,669	81	13,192

Table 21. Commercial catches of striped marlin and swordfish in the WCPFC Statistical Area south of the equator

YEAR	STRIPED MARLIN		SWORDFISH		TOTAL
	TONNES	%	TONNES	%	
1962	3,042	85	535	15	3,577
1963	2,834	79	753	21	3,587
1964	1,473	79	397	21	1,870
1965	1,890	67	914	33	2,804
1966	2,139	67	1,044	33	3,183
1967	1,345	60	884	40	2,229
1968	1,135	47	1,304	53	2,439
1969	1,018	52	924	48	1,942
1970	1,204	56	956	44	2,160
1971	2,085	52	1,942	48	4,027
1972	2,013	51	1,940	49	3,953
1973	2,065	58	1,506	42	3,571
1974	1,674	46	1,963	54	3,637
1975	1,230	51	1,185	49	2,415
1976	1,438	40	2,189	60	3,627
1977	906	55	741	45	1,647
1978	1,380	61	873	39	2,253
1979	1,512	50	1,535	50	3,047
1980	1,129	40	1,722	60	2,851
1981	1,983	47	2,265	53	4,248
1982	2,219	50	2,232	50	4,451
1983	1,195	47	1,361	53	2,556
1984	1,406	46	1,619	54	3,025
1985	1,313	40	1,966	60	3,279
1986	1,060	35	1,938	65	2,998
1987	1,328	36	2,344	64	3,672
1988	1,833	33	3,655	67	5,488
1989	2,344	48	2,548	52	4,892
1990	1,535	38	2,543	62	4,078
1991	1,288	35	2,417	65	3,705
1992	1,305	25	3,898	75	5,203
1993	1,503	35	2,783	65	4,286
1994	1,988	38	3,230	62	5,218
1995	1,886	39	2,958	61	4,844
1996	1,687	30	3,915	70	5,602
1997	1,698	24	5,311	76	7,009
1998	2,766	30	6,311	70	9,077
1999	2,288	25	6,781	75	9,069
2000	1,597	20	6,452	80	8,049
2001	1,818	22	6,403	78	8,221
2002	2,219	24	7,101	76	9,320
2003	2,663	27	7,344	73	10,007
2004	2,453	23	8,162	77	10,615
2005	1,816	21	6,766	79	8,582
2006	1,795	17	8,948	83	10,743
2007	1,737	14	10,688	86	12,425
2008	1,905	15	10,458	85	12,363
2009	1,863	18	8,352	82	10,215
2010	1,600	17	7,660	83	9,260
2011	1,784	16	9,186	84	10,970
2012	1,766	14	10,478	86	12,244
2013	1,336	12	10,059	88	11,395
2014	1,622	14	10,180	86	11,802
2015	1,566	15	9,208	85	10,774
2016	1,240	13	8,253	87	9,493
2017	1,084	13	7,419	87	8,503
2018	1,032	12	7,259	88	8,291
2019	1,075	15	5,941	85	7,016

Table 22. Commercial catches of albacore, striped marlin and swordfish in the South Pacific Ocean

YEAR	ALBACORE		STRIPED MARLIN		SWORDFISH		TOTAL
	TONNES	%	TONNES	%	TONNES	%	
1962	35,219	100	0	0	0	0	35,219
1963	31,111	100	0	0	0	0	31,111
1964	22,824	100	3	0	3	0	22,830
1965	25,455	100	4	0	3	0	25,462
1966	38,661	100	86	0	35	0	38,782
1967	43,957	99	191	0	50	0	44,198
1968	32,382	99	229	1	106	0	32,717
1969	24,805	99	106	0	31	0	24,942
1970	34,925	99	261	1	40	0	35,226
1971	38,630	83	5,237	11	2,451	5	46,318
1972	39,521	85	4,307	9	2,604	6	46,432
1973	47,330	89	3,395	6	2,727	5	53,452
1974	34,049	86	3,042	8	2,556	6	39,647
1975	23,600	84	2,629	9	1,935	7	28,164
1976	29,082	80	3,919	11	3,398	9	36,399
1977	38,740	88	2,797	6	2,305	5	43,842
1978	34,676	86	2,827	7	2,670	7	40,173
1979	27,076	80	3,966	12	2,636	8	33,678
1980	32,541	83	3,533	9	3,322	8	39,396
1981	34,784	80	4,843	11	3,632	8	43,259
1982	30,788	79	4,719	12	3,312	9	38,819
1983	25,092	81	3,153	10	2,766	9	31,011
1984	24,704	83	2,447	8	2,641	9	29,792
1985	32,328	87	2,235	6	2,642	7	37,205
1986	36,590	86	2,722	6	3,293	8	42,605
1987	25,052	75	4,170	13	4,132	12	33,354
1988	37,867	80	3,657	8	5,717	12	47,241
1989	49,076	87	3,985	7	3,627	6	56,688
1990	36,062	81	3,903	9	4,736	11	44,701
1991	35,600	81	3,349	8	4,854	11	43,803
1992	38,668	79	3,202	7	7,186	15	49,056
1993	35,438	80	3,461	8	5,135	12	44,034
1994	42,318	82	4,097	8	5,442	10	51,857
1995	38,467	83	3,305	7	4,781	10	46,553
1996	34,359	79	3,536	8	5,618	13	43,513
1997	39,490	77	3,999	8	7,631	15	51,120
1998	50,553	79	4,511	7	8,623	14	63,687
1999	39,618	78	3,047	6	7,965	16	50,630
2000	47,532	82	2,283	4	8,185	14	58,000
2001	63,208	83	2,847	4	10,529	14	76,584
2002	75,093	79	4,090	4	15,375	16	94,558
2003	63,449	79	4,095	5	12,726	16	80,270
2004	62,287	74	3,481	4	17,883	21	83,651
2005	63,879	78	2,831	3	14,738	18	81,448
2006	62,715	76	2,617	3	17,216	21	82,548
2007	58,755	75	2,336	3	16,924	22	78,015
2008	62,747	76	2,404	3	17,004	21	82,155
2009	82,927	80	2,282	2	18,833	18	104,042
2010	87,302	80	2,131	2	19,686	18	109,119
2011	66,051	73	2,791	3	21,207	24	90,049
2012	88,179	77	2,689	2	23,508	21	114,376
2013	85,037	78	2,361	2	21,699	20	109,097
2014	82,219	77	2,337	2	22,489	21	107,045
2015	82,117	76	2,115	2	23,878	22	108,110
2016	69,880	74	1,768	2	22,469	24	94,117
2017	93,415	80	1,570	1	21,997	19	116,982
2018	82,226	79	1,555	1	20,795	20	104,576
2019	86,706	81	1,712	2	18,686	17	107,104